



ThermoWise

INTELLIGENT ENERGY SAVING SOLUTIONS

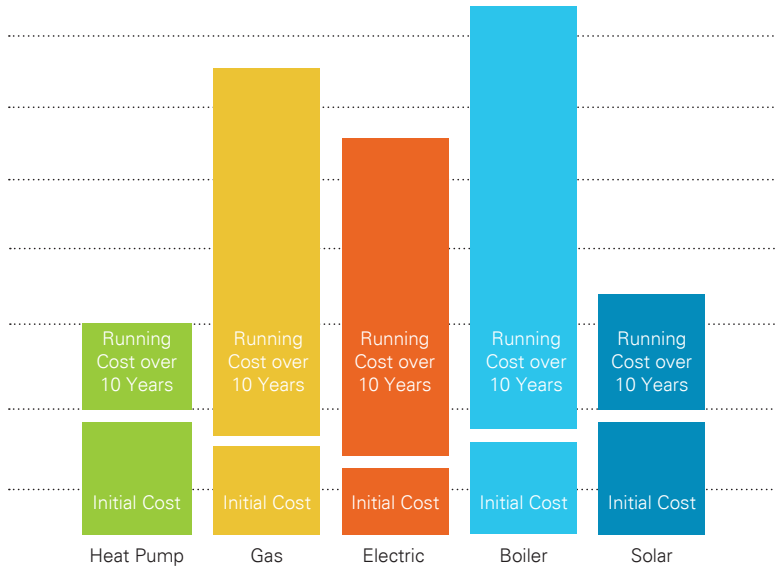
AIR TO WATER HEAT PUMPS CONSTANT TEMPERATURE 65°C RANGE SPECIFICATION SHEET



ENERGY EFFICIENT MECHANICAL TURNKEY SOLUTIONS

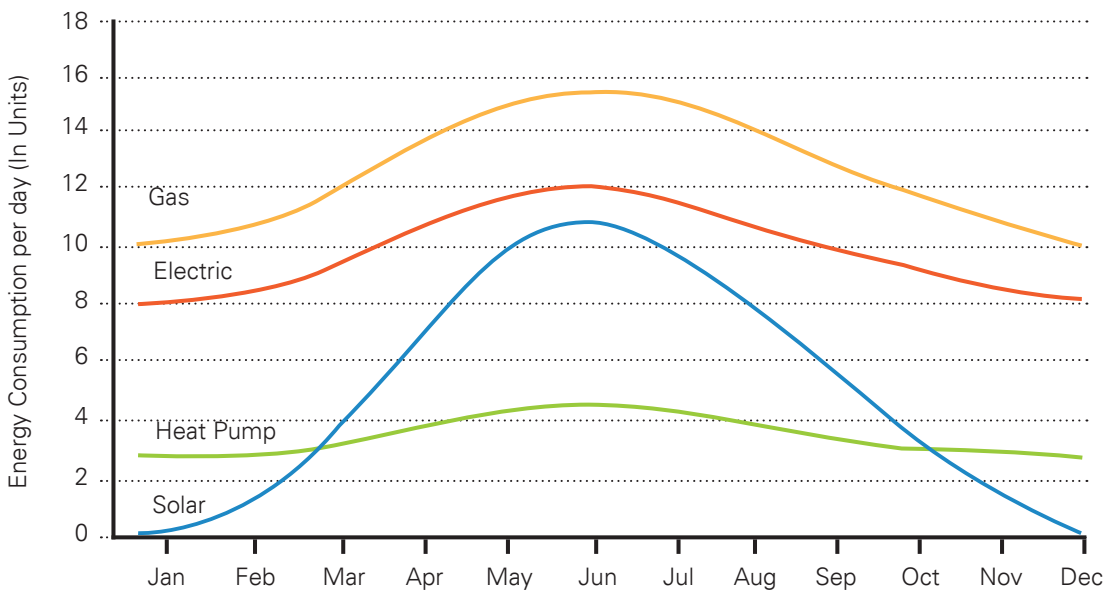
CONSTANT TEMPERATURE
DKRS RANGE ADVANTAGES

ThermoWise Life Cycle Costing Study.



- COMMERCIAL
- INDUSTRIAL
- AGRICULTURAL

ThermoWise Energy Use Consumption.



**ENERGY EFFICIENT MECHANICAL
TURNKEY SOLUTIONS**

KZN OFFICE

0860 HEAT H20 / 0860 4328 420
 TEL +27 32 947 0377 FAX +27 32 947 0349
 3 JACK SMITH ROAD, BALLITO SERVICE PARK,
 BALLITO 4420

GAUTENG OFFICE

0860 HEAT H20 / 0860 4328 420
 TEL +27 11 450 1418 FAX +27 86 602 0311
 88 DRIEHOEK ROAD, GERMISTON 1401,
 JOHANNESBURG

CAPE OFFICE

0860 HEAT H20 / 0860 4328 420
 TEL +27 43 732 5016 FAX +27 86 598 5308
 807 MAIN ROAD, GONUBIE 5257,
 EAST LONDON

P O BOX 6980, ZIMBALI 4418, SOUTH AFRICA
 info@thermowise.co.za / www.thermowise.co.za



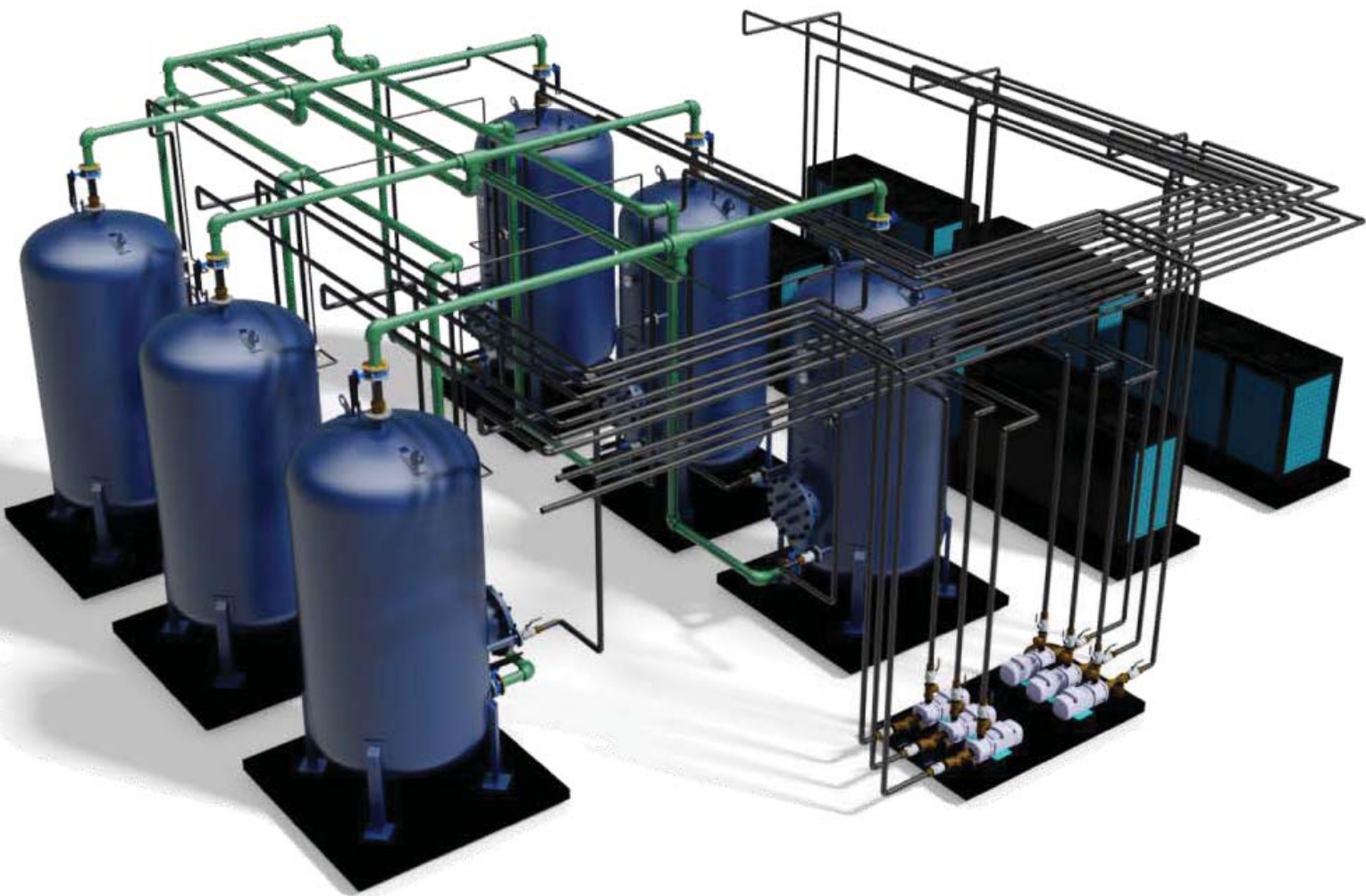
INDEX

Page 1	Features & Benefits
Page 2	Quick Reference
Page 3	Dimensional Data
Page 4-13	DKRS Specifications & Technical Parameters
Page 14	Installation Schematic

COMMERCIAL

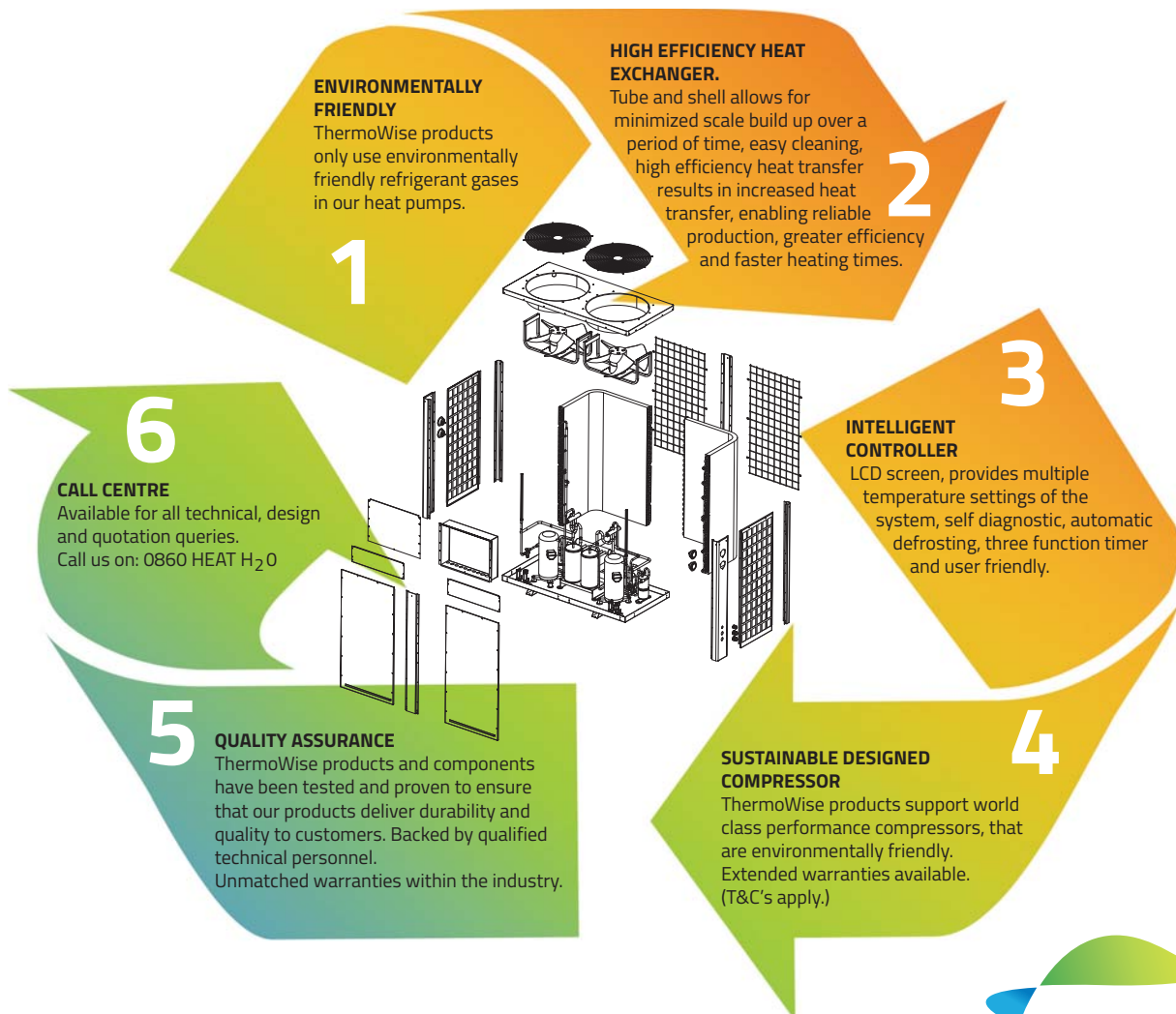
INDUSTRIAL

AGRICULTURAL



WHY ThermoWise AIR TO WATER HEAT PUMPS are the preferred choice within the market place!

As part of one of the world's largest heat pump manufacturing groups, ThermoWise delivers products that are innovative, reliable and durable, and produced to the highest standards.



CONSTANT TEMPERATURE RANGE

DKRS RANGE AIR TO WATER HEAT PUMP

9.5kW	- MODEL: DKRS - 95SN4-M2	Page 4
17kW	- MODEL: DKRS - 170SN4-M2	Page 5
20kW	- MODEL: DKRS - 200SN4-M2	Page 6
34kW	- MODEL: DKRS - 340SN4-M2	Page 7
40kW	- MODEL: DKRS - 400SN4-M2	Page 8
50kW	- MODEL: DKRS - 500SN4-M2	Page 9
60kW	- MODEL: DKRS - 600SN4-M2	Page 10
70kW	- MODEL: DKRS - 700SN4-M2	Page 11
105kW	- MODEL: DKRS - 1050SN4-M2	Page 12
140kW	- MODEL: DKRS - 1400SN4-M2	Page 13

COMMERCIAL

INDUSTRIAL

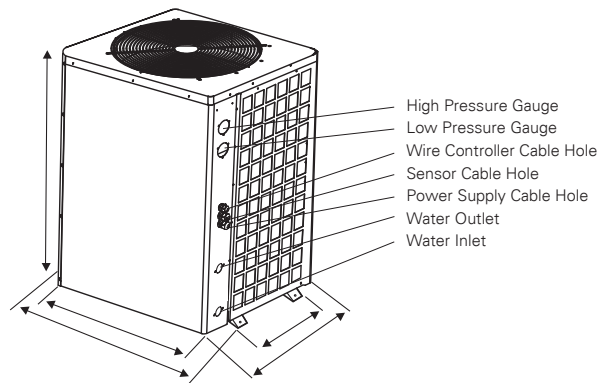
AGRICULTURAL



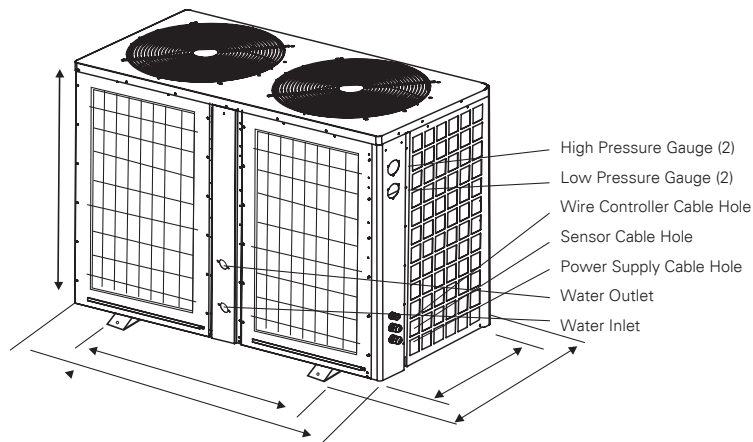
DIMENSIONAL DATA

CONSTANT TEMPERATURE RANGE

DKRS - 95SN4-M2
 DKRS - 170SN4-M2
 DKRS - 200SN4-M2



DKRS - 340SN4-M2
 DKRS - 400SN4-M2
 DKRS - 500SN4-M2
 DKRS - 600SN4-M2
 DKRS - 700SN4-M2
 DKRS - 1050SN4-M2
 DKRS - 1400SN4-M2



Model	Length (mm)	Wide (mm)	Height (mm)
DKRS - 95SN4-M2	752	690	765
DKRS - 170SN4-M2	752	690	965
DKRS - 200SN4-M2	752	690	965
DKRS - 340SN4-M2	1450	702	1060
DKRS - 400SN4-M2	1450	702	1260
DKRS - 500SN4-M2	2100	765	1290
DKRS - 600SN4-M2	2000	980	1870
DKRS - 700SN4-M2	2000	980	1870
DKRS - 1050SN4-M2	2000	980	2010
DKRS - 1400SN4-M2	2000	980	1870



INPUT 2.33kW / OUTPUT 9.5kW

MODEL NO: DKRS - 95SN4-M2

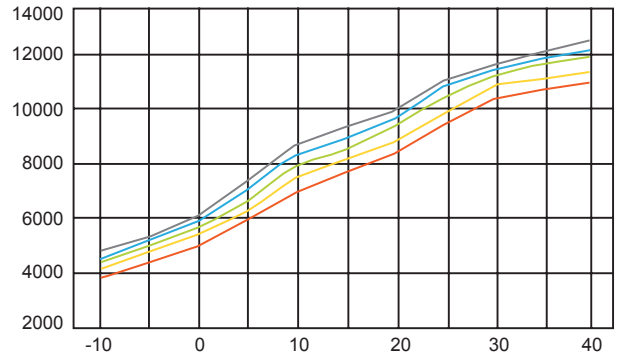
Power supply		Ph-V-Hz	220V/1PH/50HZ
Working temp		°C	-10°C~43°C
Max. outlet Water temp.		°C	65°C
Water Heating (A30/W60)	Capacity	KW	9.5
	Input	KW	2.33
	cop	W/W	4.08
	Rated current	A	12.46
	Hot water yield	L/h	204
Max. input consumption		KW	3.26
Max. input current		A	17.44
Starting current		A	63

Compressor	Model		LH48VBGC
	Type / Brand		Rotary / Mitsubishi
	NO. of compressor	PCS	1
	Capacity	KW	8.37
	Locked Rotor Amp	A	65
	Thermal protector		INNER
Capacitor	µF		60
Fan motor	Model		YDK-50M6B-3
	Brand		JUNFENG
	Input	W	150
	Capacitor	µF	4
	Speed	r/min	850/650
	Diameter of Fan	mm	440
	Air flow	m³/h	4000
	Quantity		1
Condenser	Type		Copper tube and shell
	Model		4P
	Diameter of copper pipe	mm	19
	Quantity		1
Evaporator	Number of Rows		1
	Tube pitch (a) x row pitch (b)	mm	25x22
	Fin Spacing	mm	1.8
	Fin Type		Hydrophilic Aluminum
	Tube outer dia. and Type	mm	φ 9.52 inner groove tube
	Coil length x width x height	mm	1609x22x700
Number of circuits		4	
Four-way valve	Model		STF-0218G
	Brand		Saginomiya
AC Contactor	Model		3TF3300-OX/AC220V
	Brand		Siemens
Gas Liquid separator	Model		In compressor
	Brand		HONGYUAN
Liquid Receiver	Model		145VW-B04
	Brand		HONGYUAN
Throttling Element	Type		thermostatic expansion valve
	Model		TUBE - 8 068U2074
	Brand		DANFOSS
Wire controller	Type		Intelligent & LCD
	The length of wires	m	12
	Set Temp.	°C	30~65
Water system	Materials of water pipe		Copper
	Water different pressure	Kpa	40
	Diameter, water inlet pipe	mm	DN25
	Diameter, water outlet pipe	mm	DN25
Design pressure		Mpa	2.85/0.02
Outdoor noise level	1 Meter Radius	dB(A)	55
Dimensions	Dimension(L*W*H)	mm	752*690*765
	Packing(L*W*H)	mm	840*750*900
	NG/WG	kg	87/103

INPUT 2.33kW / OUTPUT 9.5kW

MODEL NO: DKRS - 95SN4-M2

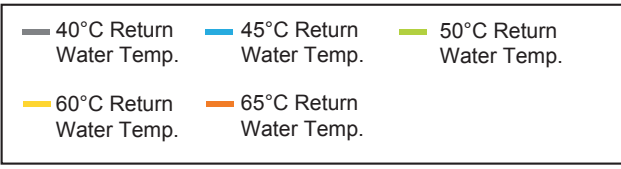
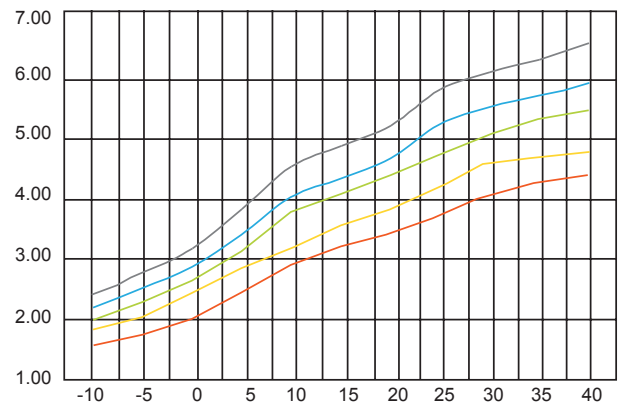
Heating Capacity Curves Ambient Temp. (°C)



INPUT 2.33kW / OUTPUT 9.5kW

MODEL NO: DKRS - 95SN4-M2

COP Curves Ambient Temp. (°C)



INPUT 4.15kW / OUTPUT 17kW

MODEL NO: DKRS - 170SN4-M2

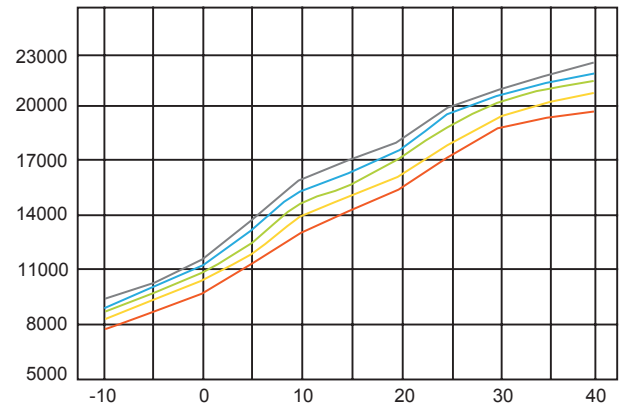
Power supply		Ph-V-Hz	380V/3PH/50HZ
Working temp		°C	-10°C~43°C
Max. outlet Water temp.		°C	65°C
Water Heating (A30/W60)	Capacity	KW	17
	Input	KW	4.15
	cop	W/W	4.10
	Rated current	A	7.43
	Hot water yield	L/h	365
Max. input consumption		KW	5.81
Max. input current		A	10.40
Starting current		A	52

Compressor	Model		ZW61KA-TPF-52E
	Type / Brand		Scroll / Copeland
	NO. of compressor	PCS	1
	Capacity	KW	14.9
	Locked Rotor Amp	A	52
	Thermal protector		INNER
	Capacitor	µF	/
Fan motor	Model		YDK-160G-6
	Brand		HELONG
	Input	W	320
	Capacitor	µF	10
	Speed	r/min	800/500
	Diameter of Fan	mm	556
	Air flow	m³/h	7000
	Quantity		1
Condenser	Type		Copper tube and shell
	Model		6P
	Diameter of copper pipe	mm	19
	Quantity		1
Evaporator	Number of Rows		1
	Tube pitch (a) x row pitch (b)	mm	25x22
	Fin Spacing	mm	1.8
	Fin Type		Hydrophilic Aluminum
	Tube outer dia. and Type	mm	φ 9.52 inner grove tube
	Coil length x width x height	mm	1609x22x900
	Number of circuits		4
Four-way valve	Model		STF-0408G
	Brand		Saginomiya
AC Contactor	Model		3TF3300-OX/AC220V
	Brand		Siemens
Gas Liquid separator	Model		LF12WLG
	Brand		HONGYUAN
Liquid Receiver	Model		145VW-B04
	Brand		HONGYUAN
Throttling Element	Type		thermostatic expansion valve
	Model		TCBE - 1 068U4201
	Brand		DANFOSS
Wire controller	Type		Intelligent & LCD
	The length of wires	m	12
	Set Temp.	°C	30~65
Water system	Materials of water pipe		Copper
	Water different pressure	Kpa	50
	Diameter, water inlet pipe	mm	DN25
	Diameter, water outlet pipe	mm	DN25
Design pressure		Mpa	2.85/0.02
Outdoor noise level	1 Meter Radius	dB(A)	57
Dimensions	Dimension(L*W*H)	mm	752*690*965
	Packing(L*W*H)	mm	840*750*1100
	NG/WG	kg	119/137

INPUT 4.15kW / OUTPUT 17kW

MODEL NO: DKRS - 170SN4-M2

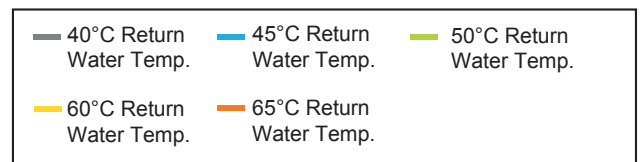
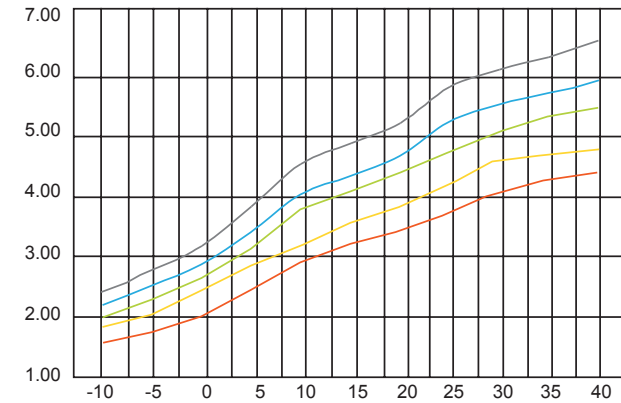
Heating Capacity Curves Ambient Temp. (°C)



INPUT 4.15kW / OUTPUT 17kW

MODEL NO: DKRS - 170SN4-M2

COP Curves Ambient Temp. (°C)



INPUT 4.9kW / OUTPUT 20kW

MODEL NO: DKRS - 200SN4-M2

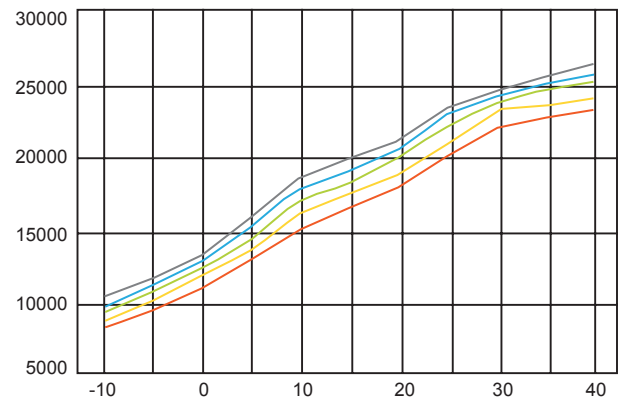
Power supply		Ph-V-Hz	380V/3PH/50HZ
Working temp		°C	-10°C~43°C
Max. outlet Water temp.		°C	65°C
Water Heating (A30/W60)	Capacity	KW	20
	Input	KW	4.9
	cop	W/W	4.08
	Rated current	A	8.77
	Hot water yield	L/h	430
Max. input consumption		KW	6.86
Max. input current		A	12.28
Starting current		A	58

Compressor	Model		ZW72KA-TPF-52E
	Type / Brand		Scroll / Copeland
	NO. of compressor	PCS	1
	Capacity	KW	17.6
	Locked Rotor Amp	A	58
	Thermal protector		INNER
	Capacitor	µF	/
Fan motor	Model		YDK-160G-6
	Brand		HELONG
	Input	W	320
	Capacitor	µF	10
	Speed	r/min	800/500
	Diameter of Fan	mm	556
	Air flow	m³/h	7000
	Quantity		1
Condenser	Type		Copper tube and shell
	Model		7P
	Diameter of copper pipe	mm	19
	Quantity		1
Evaporator	Number of Rows		2
	Tube pitch (a) x row pitch (b)	mm	25x22
	Fin Spacing	mm	1.8
	Fin Type		Hydrophilic Aluminum
	Tube outer dia. and Type	mm	φ 9.52 inner grove tube
	Coil length x width x height	mm	1609x38x900
	Number of circuits		8
Four-way valve	Model		STF-0408G
	Brad		Saginomiya
AC Contactor	Model		3TF3300-OX/AC220V
	Brad		Siemens
Gas Liquid separator	Model		LF12WLG
	Brad		HONGYUAN
Liquid Receiver	Model		145VW-B04
	Brad		HONGYUAN
Throttling Element	Type		thermostatic expansion valve
	Model		TCBE - 2 068U4202
	Brad		DANFOSS
Wire controller	Type		Intelligent & LCD
	The length of wires	m	12
	Set Temp.	°C	30~65
Water system	Materials of water pipe		Copper
	Water different pressure	Kpa	55
	Diameter,water inlet pipe	mm	DN25
	Diameter,water outlet pipe	mm	DN25
Design pressure		Mpa	2.85/0.02
Outdoor noise level	1 Meter Radius	dB(A)	57
Dimensions	Dimension(L*W*H)	mm	752*690*965
	Packing(L*W*H)	mm	840*750*1100
	NG/WG	kg	139/157

INPUT 4.9kW / OUTPUT 20kW

MODEL NO: DKRS - 200SN4-M2

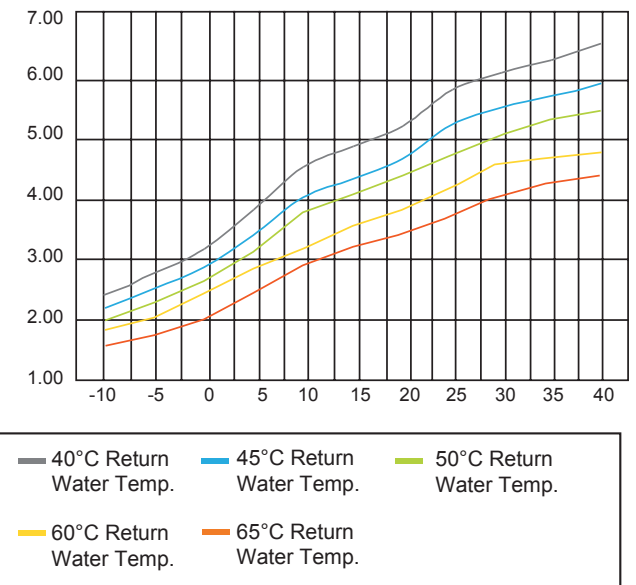
Heating Capacity Curves Ambient Temp. (°C)



INPUT 4.9kW / OUTPUT 20kW

MODEL NO: DKRS - 200SN4-M2

COP Curves Ambient Temp. (°C)



INPUT 8.3kW / OUTPUT 34kW

MODEL NO: DKRS - 340SN4-M2

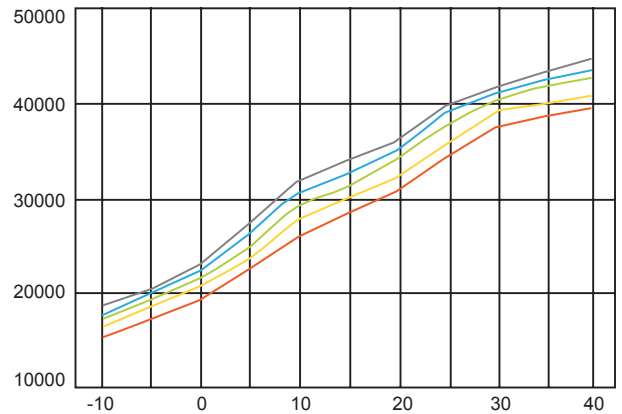
Power supply		Ph-V-Hz	380V/3PH/50HZ
Working temp		°C	-10°C~43°C
Max. outlet Water temp.		°C	65°C
Water Heating (A30/W60)	Capacity	KW	34
	Input	KW	8.3
	cop	W/W	4.10
	Rated current	A	14.85
	Hot water yield	L/h	731
Max. input consumption		KW	11.62
Max. input current		A	20.79
Starting current		A	60

Compressor	Model		ZW61KA-TPF-52E		
	Type / Brand		Scroll / Copeland		
	NO. of compressor	PCS		2	
	Capacity	KW		14.9	
	Locked Rotor Amp	A		52	
	Thermal protector			INNER	
	Capacitor	µF		/	
Fan motor	Model		YDK-160G-6		
	Brand		HELONG		
	Input	W		320	
	Capacitor	µF		10	
	Speed	r/min		800/500	
	Diameter of Fan	mm		556	
	Air flow	m³/h		7000	
	Quantity			2	
Condenser	Type		Copper tube and shell		
	Model		6P		
	Diameter of copper pipe	mm	19		
	Quantity			2	
Evaporator	Number of Rows		2		
	Tube pitch (a) x row pitch (b)	mm	25x22		
	Fin Spacing	mm	1.8		
	Fin Type		Hydrophilic Aluminum		
	Tube outer dia. and Type	mm	φ 9.52 inner groove tube		
	Coil length x width x height	mm	two1082x44x1000		
	Number of circuits			12	
Four-way valve	Model		STF-0408G		
	Brand		Saginomiya		
AC Contactor	Model		3TF3300-OX/AC220V		
	Brand		Siemens		
Gas Liquid separator	Model		LF12WLG		
	Brand		HONGYUAN		
Liquid Receiver	Model		145VW-B04		
	Brand		HONGYUAN		
Throttling Element	Type		thermostatic expansion valve		
	Model		TCBE - 1 068U2401		
	Brand		DANFOSS		
Wire controller	Type		Intelligent & LCD		
	The length of wires	m		12	
	Set Temp.	°C		30~65	
Water system	Materials of water pipe		Copper		
	Water different pressure	Kpa		55	
	Diameter, water inlet pipe	mm		DN40	
	Diameter, water outlet pipe	mm		DN40	
Design pressure		Mpa		2.85/0.02	
Outdoor noise level	1 Meter Radius			dB(A)	60
Dimensions	Dimension(L*W*H)	mm			1450*702*1060
	Packing(L*W*H)	mm			1525*805*1220
	NG/WG				kg

INPUT 8.3kW / OUTPUT 34kW

MODEL NO: DKRS - 340SN4-M2

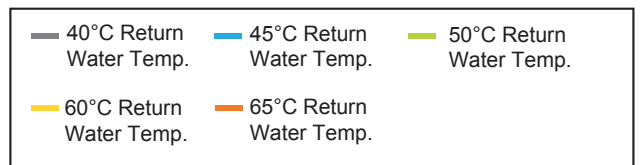
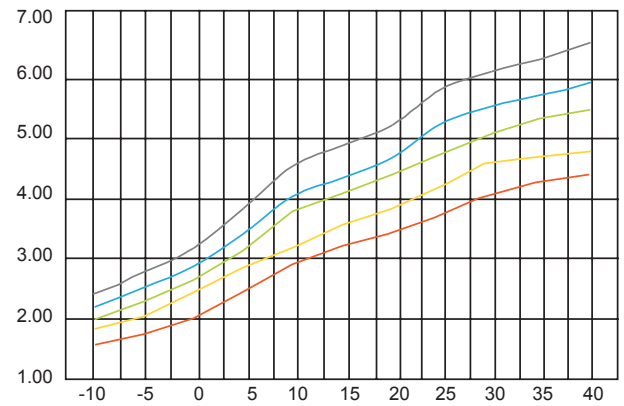
Heating Capacity Curves Ambient Temp. (°C)



INPUT 8.3kW / OUTPUT 34kW

MODEL NO: DKRS - 340SN4-M2

COP Curves Ambient Temp. (°C)



INPUT 9.8kW / OUTPUT 40kW

MODEL NO: DKRS - 400SN4-M2

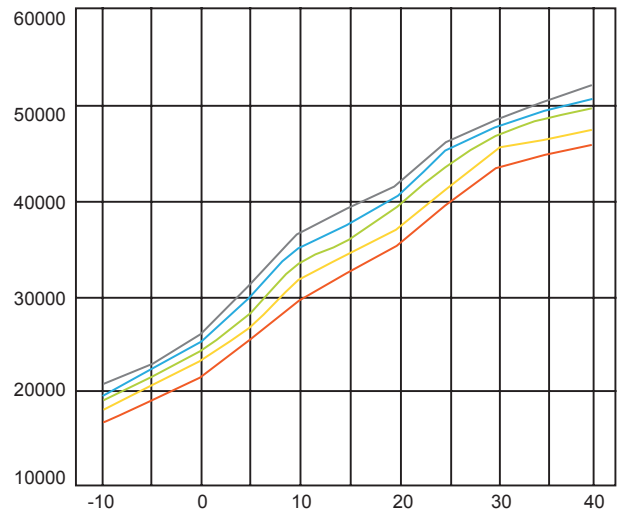
Power supply		Ph-V-Hz	380V/3PH/50HZ
Working temp		°C	-10°C~43°C
Max. outlet Water temp.		°C	65°C
Water Heating (A30/W60)	Capacity	KW	40
	Input	KW	9.8
	cop	W/W	4.08
	Rated current	A	17.54
	Hot water yield	L/h	860
Max. input consumption		KW	13.72
Max. input current		A	24.55
Starting current		A	70

Compressor	Model		ZW72KA-TPF-52E
	Type / Brand		Scroll / Copeland
	NO. of compressor	PCS	2
	Capacity	KW	17.6
	Locked Rotor Amp	A	58
	Thermal protector		INNER
	Capacitor	µF	/
Fan motor	Model		YDK-160G-6
	Brand		HELONG
	Input	W	320
	Capacitor	µF	10
	Speed	r/min	800/500
	Diameter of Fan	mm	556
	Air flow	m³/h	7000
	Quantity		2
	Condenser	Type	
Model			7P
Diameter of copper pipe		mm	19
Quantity			2
Evaporator	Number of Rows		2
	Tube pitch (a) x row pitch (b)	mm	25x22
	Fin Spacing	mm	1.8
	Fin Type		Hydrophilic Aluminum
	Tube outer dia. and Type	mm	φ 9.52 inner groove tube
	Coil length x width x height	mm	two 1082x44x1200
	Number of circuits		14
	Four-way valve	Model	
Brand			Saginomiya
AC Contactor	Model		3TF3300-OX/AC220V
	Brand		Siemens
Gas Liquid separator	Model		LF12WLG
	Brand		HONGYUAN
Liquid Receiver	Model		145VW-B04
	Brand		HONGYUAN
Throttling Element	Type		thermostatic expansion valve
	Model		TCBE - 2 068U4202
	Brand		DANFOSS
Wire controller	Type		Intelligent & LCD
	The length of wires	m	12
	Set Temp.	°C	30~65
Water system	Materials of water pipe		Copper
	Water different pressure	Kpa	55
	Diameter, water inlet pipe	mm	DN40
	Diameter, water outlet pipe	mm	DN40
Design pressure		Mpa	2.85/0.02
Outdoor noise level	1 Meter Radius	dB(A)	61
Dimensions	Dimension(L*W*H)	mm	1450*702*1260
	Packing(L*W*H)	mm	1525*805*1420
	NG/WG	kg	268/316

INPUT 9.8kW / OUTPUT 40kW

MODEL NO: DKRS - 400SN4-M2

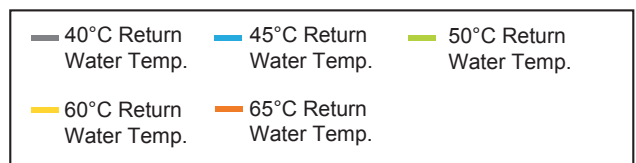
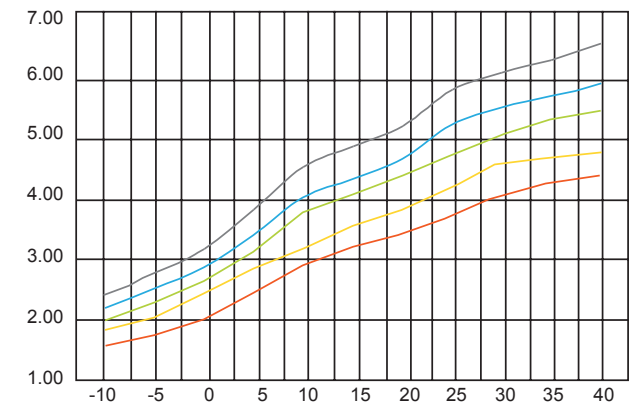
Heating Capacity Curves Ambient Temp. (°C)



INPUT 9.8kW / OUTPUT 40kW

MODEL NO: DKRS - 400SN4-M2

COP Curves Ambient Temp. (°C)



INPUT 12.4kW / OUTPUT 50kW

MODEL NO: DKRS - 500SN4-M2

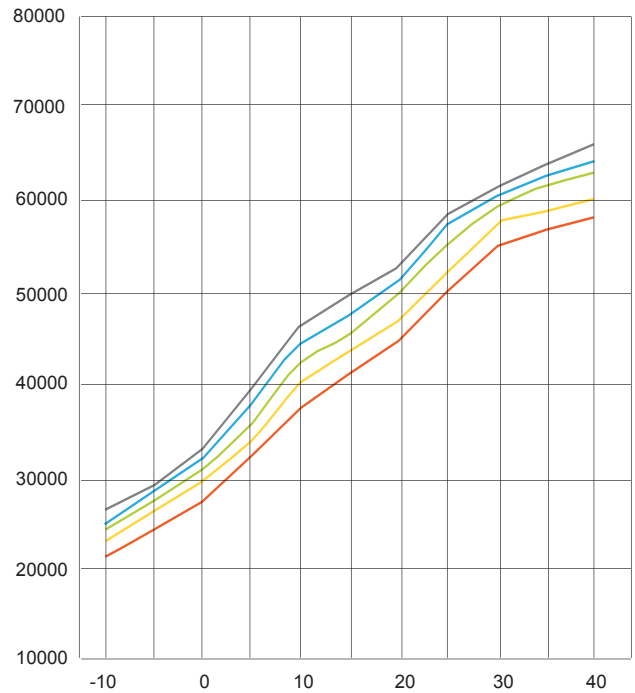
Power supply		Ph-V-Hz	380V/3PH/50HZ
Working temp		°C	-10°C~43°C
Max. outlet Water temp.		°C	65°C
Water Heating (A30/W60)	Capacity	KW	50
	Input	KW	12.4
	cop	W/W	4.03
	Rated current	A	22.19
	Hot water yield	L/h	1075
Max. input consumption		KW	17.36
Max. input current		A	31.07
Starting current		A	90

Compressor	Model		ZW61KA-TPF-52E	
	Type / Brand		Scroll / Copeland	
	NO. of compressor	PCS		3
	Capacity	KW		14.9
	Locked Rotor Amp	A		52
	Thermal protector			INNER
	Capacitor	µF		/
Fan motor	Model		YDK-160G-6	
	Brand		HELONG	
	Input	W		320
	Capacitor	µF		10
	Speed	r/min		800/500
	Diameter of Fan	mm		556
	Air flow	m³/h		7000
	Quantity			3
Condenser	Type		Copper tube and shell	
	Model		6P	
	Diameter of copper pipe	mm		19
	Quantity			2
Evaporator	Number of Rows		3	
	Tube pitch (a) x row pitch (b)	mm		25x22
	Fin Spacing	mm		1.8
	Fin Type			Hydrophilic Aluminum
	Tube outer dia. and Type	mm		φ 9.52 inner groove tube
	Coil length x width x height	mm		three 935x44x1200
	Number of circuits			21
Four-way valve	Model		STF-0408G	
	Brand		Saginomiya	
AC Contactor	Model		3TF3300-OX/AC220V	
	Brand		Siemens	
Gas Liquid separator	Model		LF12WLG	
	Brand		HONGYUAN	
Liquid Receiver	Model		145VW-B04	
	Brand		HONGYUAN	
Throttling Element	Type		thermostatic expansion valve	
	Model		TCBE - 1 068U4201	
	Brand		DANFOSS	
Wire controller	Type		Intelligent & LCD	
	The length of wires	m		12
	Set Temp.	°C		30~65
Water system	Materials of water pipe			Copper
	Water different pressure	Kpa		57
	Diameter, water inlet pipe	mm		DN50
	Diameter, water outlet pipe	mm		DN50
Design pressure		Mpa		2.85/0.02
Outdoor noise level	1 Meter Radius			dB(A) 63
Dimensions	Dimension(L*W*H)	mm		2150*765*1290
	Packing(L*W*H)	mm		2250*865*1450
	NG/WG	kg		428/490

INPUT 12.4kW / OUTPUT 50kW

MODEL NO: DKRS - 500SN4-M2

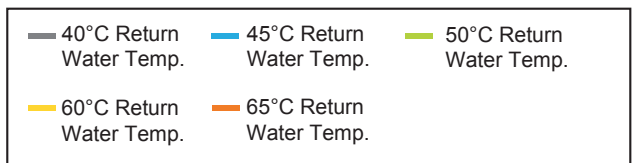
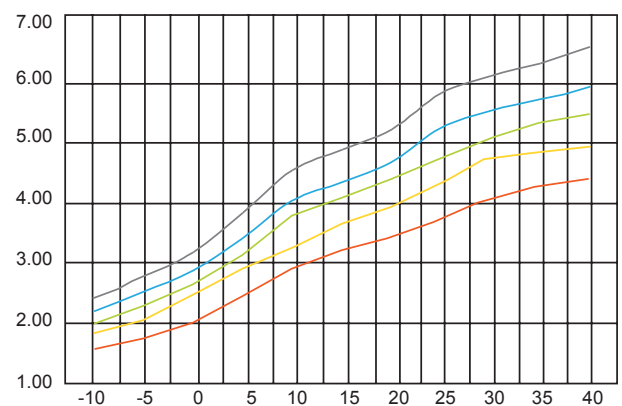
Heating Capacity Curves Ambient Temp. (°C)



INPUT 12.4kW / OUTPUT 50kW

MODEL NO: DKRS - 500SN4-M2

COP Curves Ambient Temp. (°C)



INPUT 15kW / OUTPUT 60kW

MODEL NO: DKRS - 600SN4-M2

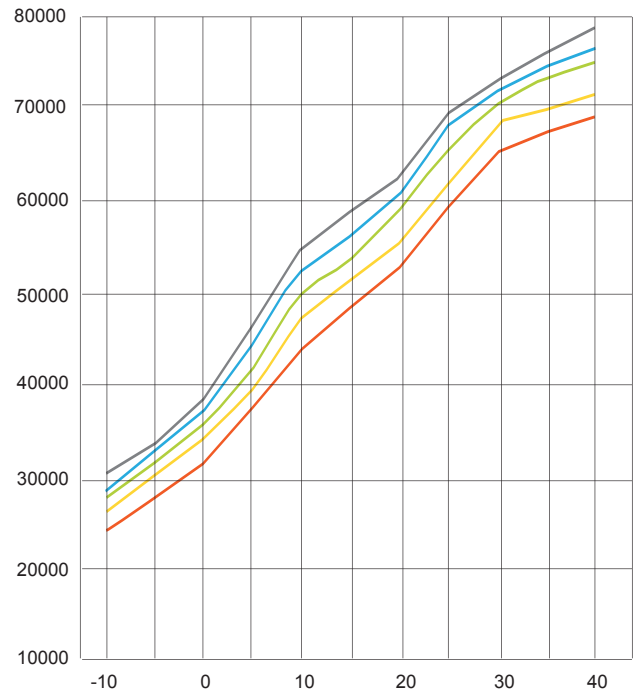
Power supply		Ph-V-Hz	380V/3PH/50HZ
Working temp		°C	-10°C~43°C
Max. outlet Water temp.		°C	65°C
Water Heating (A30/W60)	Capacity	KW	60
	Input	KW	15
	cop	W/W	4.00
	Rated current	A	26.84
	Hot water yield	L/h	1290
Max. input consumption		KW	21.00
Max. input current		A	37.58
Starting current		A	100

Compressor	Model		ZW72KA-TPF-52E
	Type / Brand		Scroll / Copeland
	NO. of compressor	PCS	3
	Capacity	KW	17.6
	Locked Rotor Amp	A	58
	Thermal protector		INNER
Capacitor		µF	/
Fan motor	Model		YDK-160G-6
	Brand		HELONG
	Input	W	320
	Capacitor	µF	10
	Speed	r/min	800/500
	Diameter of Fan	mm	556
	Air flow	m³/h	7000
Quantity			3
Condenser	Type		Copper tube and shell
	Model		7P
	Diameter of copper pipe	mm	19
	Quantity		
Evaporator	Number of Rows		3
	Tube pitch (a) x row pitch (b)	mm	25x22
	Fin Spacing	mm	1.8
	Fin Type		Hydrophilic Aluminum
	Tube outer dia. and Type	mm	ø 9.52 inner groove tube
	Coil length x width x height	mm	three 935x44x1200
	Number of circuits		
Four-way valve	Model		STF-0408G
	Brand		Saginomiya
AC Contactor	Model		3TF3300-OX/AC220V
	Brand		Siemens
Gas Liquid separator	Model		LF12WLG
	Brand		HONGYUAN
Liquid Receiver	Model		145VW-B04
	Brand		HONGYUAN
Throttling Element	Type		thermostatic expansion valve
	Model		TCBE - 2 068U4202
	Brand		DANFOSS
Wire controller	Type		Intelligent & LCD
	The length of wires	m	12
	Set Temp.	°C	30~65
Water system	Materials of water pipe		Copper
	Water different pressure	Kpa	60
	Diameter, water inlet pipe	mm	DN50
	Diameter, water outlet pipe	mm	DN50
Design pressure		Mpa	2.85/0.02
Outdoor noise level	1 Meter Radius	dB(A)	68
Dimensions	Dimension(L*W*H)	mm	2000*980*1870
	Packing(L*W*H)	mm	2130*1100*2050
	NG/WG	kg	530/620

INPUT 15kW / OUTPUT 60kW

MODEL NO: DKRS - 600SN4-M2

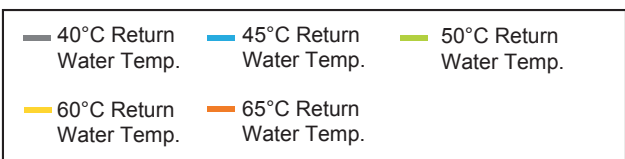
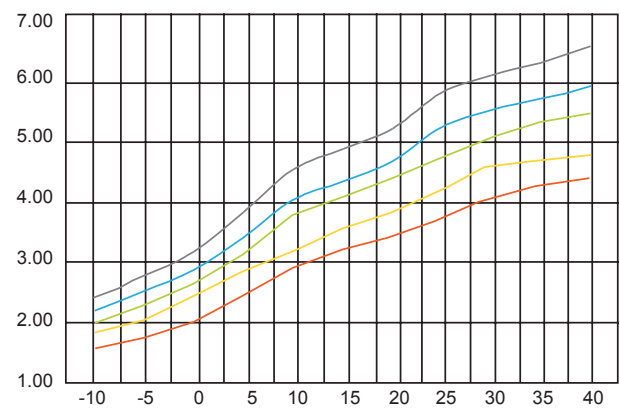
Heating Capacity Curves Ambient Temp. (°C)



INPUT 15kW / OUTPUT 60kW

MODEL NO: DKRS - 600SN4-M2

COP Curves Ambient Temp. (°C)



INPUT 17.3kW / OUTPUT 70kW

MODEL NO: DKRS - 700SN4-M2

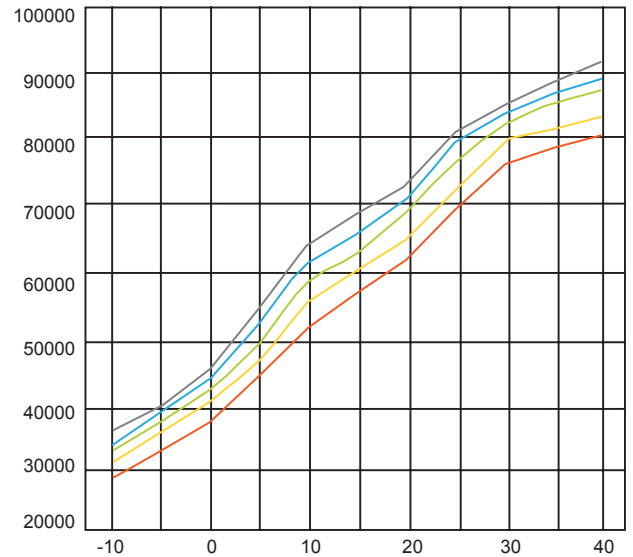
Power supply		Ph-V-Hz	380V/3PH/50HZ
Working temp		°C	-10°C~43°C
Max. outlet Water temp.		°C	65°C
Water Heating (A30/W60)	Capacity	KW	70
	Input	KW	17.3
	cop	W/W	4.05
	Rated current	A	30.96
	Hot water yield	L/h	1505
Max. input consumption		KW	24.22
Max. input current		A	43.34
Starting current		A	130

Compressor	Model		ZW125KA-TPF-522
	Type / Brand		Scroll / Copeland
	NO. of compressor	PCS	2
	Capacity	KW	30.6
	Locked Rotor Amp	A	100
	Thermal protector		INNER
Fan motor	Capacitor	µF	/
	Model		YWF.A6T-630S-5DIIS00
	Brand		DUNLI
	Input	W	500
	Capacitor	µF	/
	Speed	r/min	900
	Diameter of Fan	mm	630
	Air flow	m³/h	10800
Quantity		2	
Condenser	Type		Copper tube and shell
	Model		12
	Diameter of copper pipe	mm	25.4*2
	Quantity		2
Evaporator	Number of Rows		2
	Tube pitch (a) x row pitch (b)	mm	25x22
	Fin Spacing	mm	2.2
	Fin Type		Hydrophilic Aluminum
	Tube outer dia. and Type	mm	φ 9.52 inner grove tube
	Coil length x width x height	mm	two1740x44x900
	Number of circuits		9*2
Four-way valve	Model		STF-0712G
	Brad		Saginomiya
AC Contactor	Model		3TF3400-OX/AC220V
	Brad		Siemens
Gas Liquid separator	Model		LF12WL05
	Brad		HONGYUAN
Liquid Receiver	Model		KFR120WLC-19A
	Brad		MINYUAN
Throttling Element	Type		thermostatic expansion valve
	Model		TGEL - 11 067N2157
	Brad		DANFOSS
Wire controller	Type		Intelligent & LCD
	The length of wires	m	12
	Set Temp.	°C	30~65
Water system	Materials of water pipe		Copper
	Water different pressure	Kpa	60
	Diameter, water inlet pipe	mm	DN50
	Diameter, water outlet pipe	mm	DN50
Design pressure		Mpa	2.85/0.02
Outdoor noise level	1 Meter Radius	dB(A)	68
Dimensions	Dimension(L*W*H)	mm	2000*980*1870
	Packing(L*W*H)	mm	2130*1100*2050
	NG/WG	kg	530/620

INPUT 17.3kW / OUTPUT 70kW

MODEL NO: DKRS - 700SN4-M2

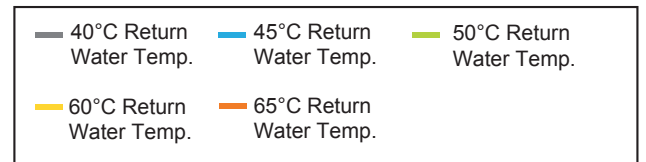
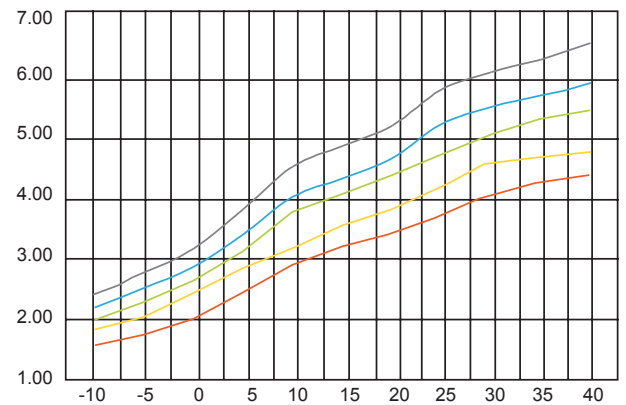
Heating Capacity Curves Ambient Temp. (°C)



INPUT 17.3kW / OUTPUT 70kW

MODEL NO: DKRS - 700SN4-M2

COP Curves Ambient Temp. (°C)



INPUT 25.7kW / OUTPUT 105kW

MODEL NO: DKRS - 1050SN4-M2

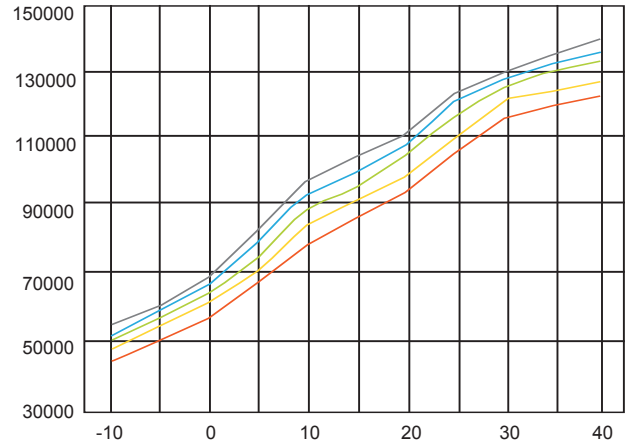
Power supply		Ph-V-Hz	380V/3PH/50HZ
Working temp		°C	-10°C~43°C
Max. outlet Water temp.		°C	65°C
Water Heating (A30/W60)	Capacity	KW	105
	Input	KW	25.7
	cop	W/W	4.09
	Rated current	A	45.99
	Hot water yield	L/h	2257
Max. input consumption		KW	35.98
Max. input current		A	64.39
Starting current		A	200

Compressor	Model		VR190KS-TPF-522	
	Type / Brand		Scroll / Copeland	
	NO. of compressor	PCS		2
	Capacity	KW		45.6
	Locked Rotor Amp	A		150
	Thermal protector			INNER
	Capacitor	µF		/
Fan motor	Model		YWF.A6T-710S-5DIIIIS00	
	Brand		DUNLI	
	Input	W		1000
	Capacitor	µF		/
	Speed	r/min		900
	Diameter of Fan	mm		710
	Air flow	m³/h		13500
	Quantity			2
Condenser	Type		Copper tube and shell	
	Model		15	
	Diameter of copper pipe	mm	25.4*2	
	Quantity		2	
Evaporator	Number of Rows		3	
	Tube pitch (a) x row pitch (b)	mm	25x22	
	Fin Spacing	mm	2.2	
	Fin Type		Hydrophilic Aluminum	
	Tube outer dia. and Type	mm	φ 9.52 inner grove tube	
	Coil length x width x height	mm	two 1740x66x1000	
	Number of circuits		10*2	
Four-way valve	Model		STF-1511G	
	Brad		Saginomiya	
AC Contactor	Model		3TF3500-OX/AC220V	
	Brad		Siemens	
Gas Liquid separator	Model		LF12WL05	
	Brad		HONGYUAN	
Liquid Receiver	Model		KFR120WLC-19A	
	Brad		MINYUAN	
Throttling Element	Type		thermostatic expansion valve	
	Model		TGEX - 15 067N2161	
	Brad		DANFOSS	
Wire controller	Type		Intelligent & LCD	
	The length of wires	m	12	
	Set Temp.	°C	30~65	
Water system	Materials of water pipe		Copper	
	Water different pressure	Kpa	60	
	Diameter,water inlet pipe	mm	DN50	
	Diameter,water outlet pipe	mm	DN50	
Design pressure		Mpa	2.8/0.02	
Outdoor noise level	1 Meter Radius	dB(A)	71	
Dimensions	Dimension(L*W*H)	mm	2000*980*2012	
	Packing(L*W*H)	mm	2130*1100*2200	
	NG/WG	kg	620/710	

INPUT 25.7kW / OUTPUT 105kW

MODEL NO: DKRS - 1050SN4-M2

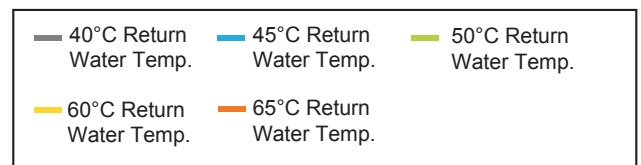
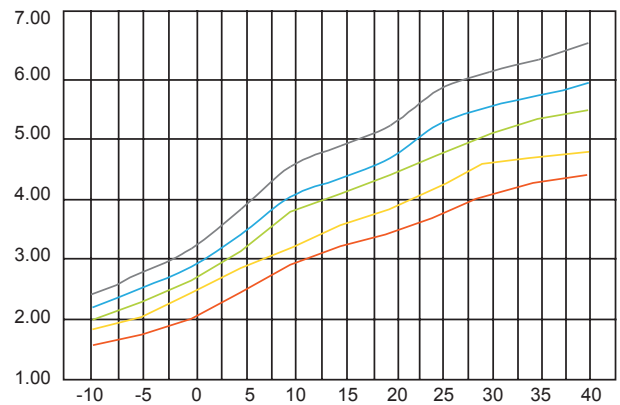
Heating Capacity Curves Ambient Temp. (°C)



INPUT 25.7kW / OUTPUT 105kW

MODEL NO: DKRS - 1050SN4-M2

COP Curves Ambient Temp. (°C)



INPUT 34.6kW / OUTPUT 140kW

MODEL NO: DKRS - 1400SN4-M2

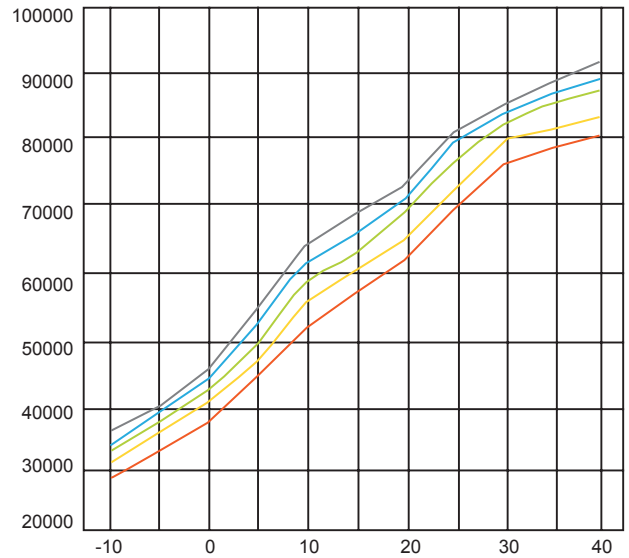
Power supply		Ph-V-Hz	380V/3PH/50HZ
Working temp		°C	-10°C~43°C
Max. outlet Water temp.		°C	65°C
Water Heating (A30/W60)	Capacity	KW	140
	Input	KW	34.6
	cop	W/W	4.06
	Rated current	A	62
	Hot water yield	L/h	3010
Max. input consumption		KW	48.44
Max. input current		A	67.82
Starting current		A	348

Compressor	Model		ZW125KA-TPF-522
	Type / Brand		Scroll / Copeland
	NO. of compressor	PCS	4
	Capacity	KW	30.6
	Locked Rotor Amp	A	100
	Thermal protector		INNER
	Capacitor	µF	/
Fan motor	Model		YWF.A6T-630S-5DIIIS00
	Brand		DUNLI
	Input	W	500
	Capacitor	µF	/
	Speed	r/min	900
	Diameter of Fan	mm	630
	Air flow	m³/h	10800
	Quantity		2
Condenser	Type		Copper tube and shell
	Model		12
	Diameter of copper pipe	mm	25.4*2
	Quantity		2
Evaporator	Number of Rows		2
	Tube pitch (a) x row pitch (b)	mm	25x22
	Fin Spacing	mm	2.2
	Fin Type		Hydrophilic Aluminum
	Tube outer dia. and Type	mm	φ 9.52 inner groove tube
	Coil length x width x height	mm	two 1740x44x900
	Number of circuits		9*2
Four-way valve	Model		STF-0712G
	Brand		Saginomiya
AC Contactor	Model		3TF3400-OX/AC220V
	Brand		Siemens
Gas Liquid separator	Model		LF12WL05
	Brand		HONGYUAN
Liquid Receiver	Model		KFR120WLC-19A
	Brand		MINYUAN
Throttling Element	Type		thermostatic expansion valve
	Model		TGEL - 11 067N2157
	Brand		DANFOSS
Wire controller	Type		Intelligent & LCD
	The length of wires	m	12
	Set Temp.	°C	30~65
Water system	Materials of water pipe		Copper
	Water different pressure	Kpa	60
	Diameter,water inlet pipe	mm	DN50
	Diameter,water outlet pipe	mm	DN50
Design pressure		Mpa	2.85/0.02
Outdoor noise level	1 Meter Radius	dB(A)	68
Dimensions	Dimension(L*W*H)	mm	2000*980*1870
	Packing(L*W*H)	mm	2130*1100*2050
	NG/WG	kg	530/620

INPUT 34.6kW / OUTPUT 140kW

MODEL NO: DKRS - 1400SN4-M2

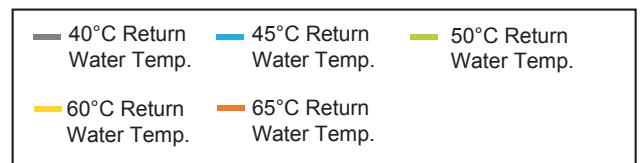
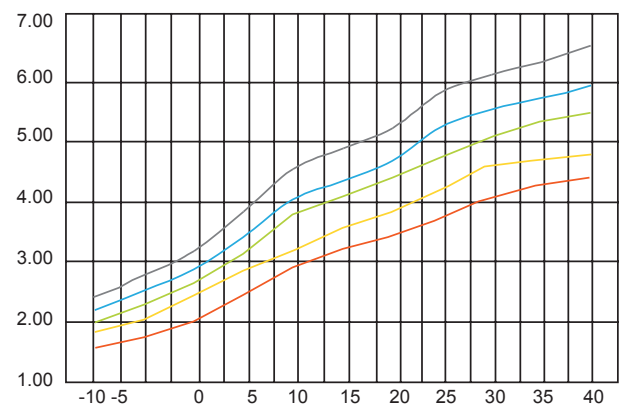
Heating Capacity Curves Ambient Temp. (°C)



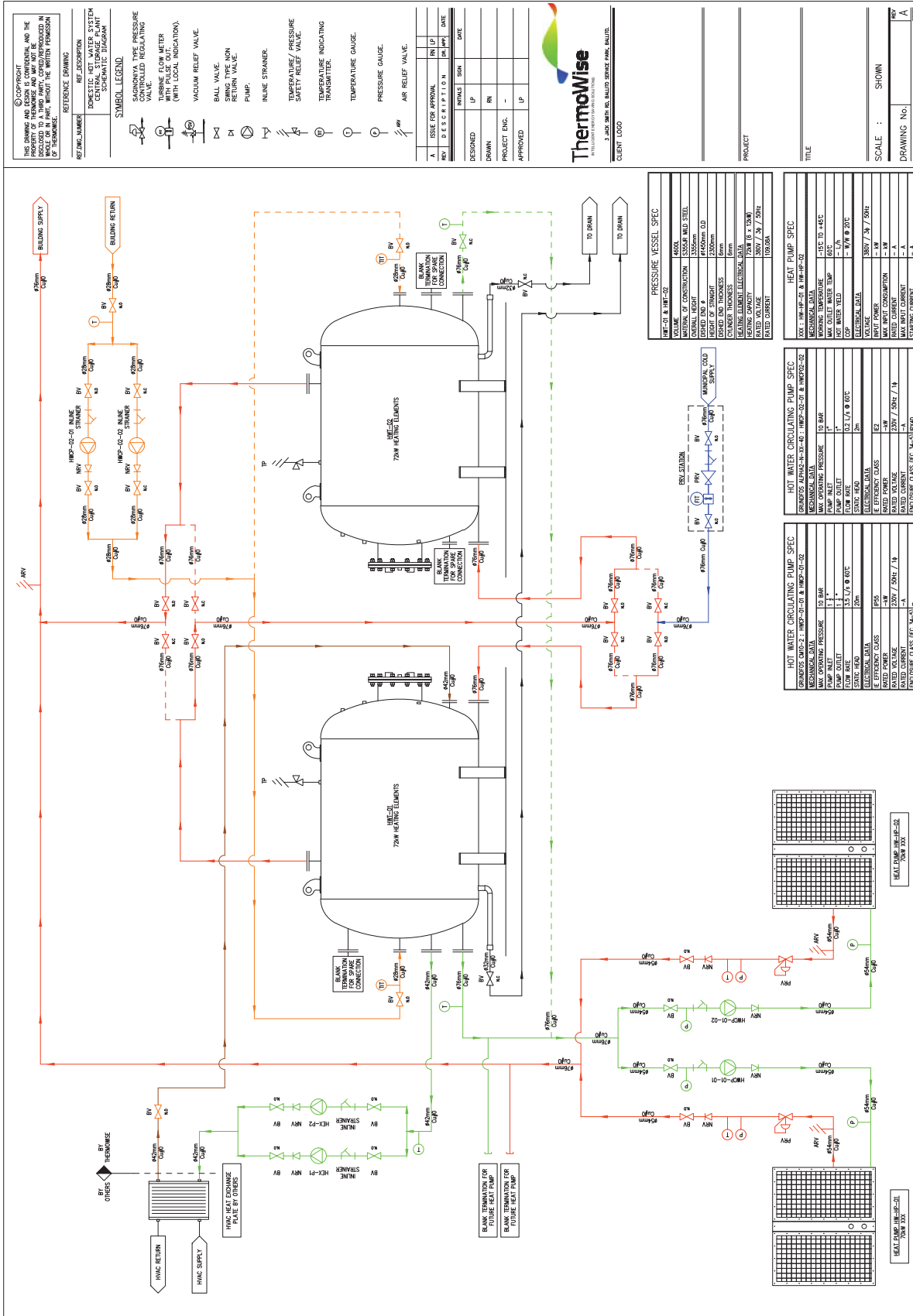
INPUT 34.6kW / OUTPUT 140kW

MODEL NO: DKRS - 1400SN4-M2

COP Curves Ambient Temp. (°C)



CONSTANT TEMPERATURE INSTALLATION SCHEMATIC



We can create a more sustainable, cleaner and safer world by making wiser energy choices.

–Robert Alan



ThermoWise
INTELLIGENT ENERGY SAVING SOLUTIONS



ThermoWise
INTELLIGENT ENERGY SAVING SOLUTIONS