



# ThermoWise

INTELLIGENT ENERGY SAVING SOLUTIONS

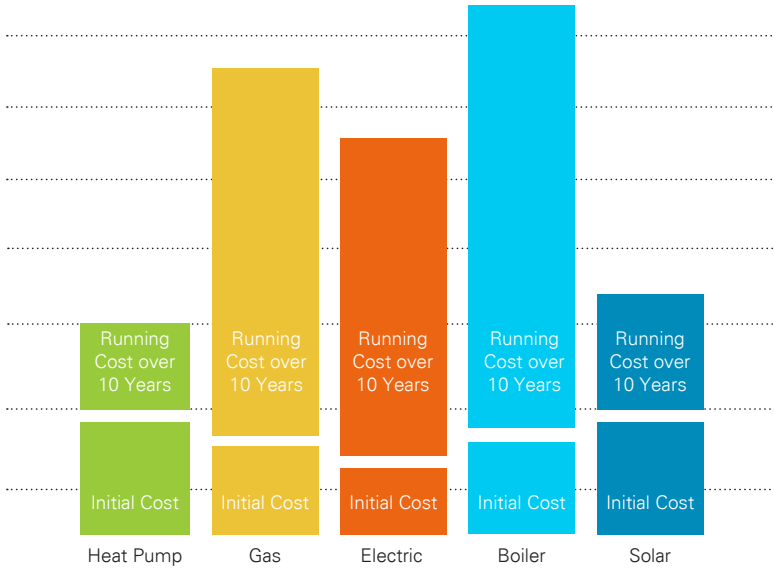
## AIR TO WATER HEAT PUMPS HIGH TEMPERATURE RANGE - 75°C UNITS SPECIFICATION SHEET



**ENERGY EFFICIENT MECHANICAL TURNKEY SOLUTIONS**

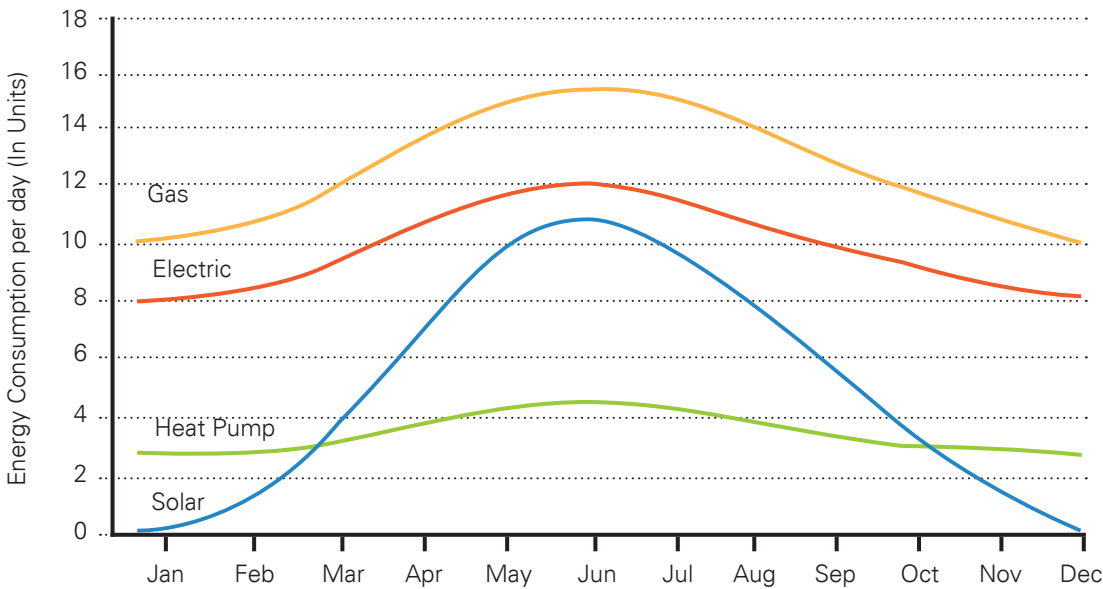
HIGH TEMPERATURE HKRS RANGE ADVANTAGES

ThermoWise Life Cycle Costing Study.



- COMMERCIAL
- INDUSTRIAL
- AGRICULTURAL

ThermoWise Energy Use Consumption.



**ENERGY EFFICIENT MECHANICAL TURNKEY SOLUTIONS**

**KZN OFFICE**

0860 HEAT H20 / 0860 4328 420  
 TEL +27 32 947 0377 FAX +27 32 947 0349  
 3 JACK SMITH ROAD, BALLITO SERVICE PARK,  
 BALLITO 4420

**GAUTENG OFFICE**

0860 HEAT H20 / 0860 4328 420  
 TEL +27 11 450 1418 FAX +27 86 602 0311  
 88 DRIEHOEK ROAD, GERMISTON 1401,  
 JOHANNESBURG

**CAPE OFFICE**

0860 HEAT H20 / 0860 4328 420  
 TEL +27 43 732 5016 FAX +27 86 598 5308  
 807 MAIN ROAD, GONUBIE 5257,  
 EAST LONDON

P O BOX 6980, ZIMBALI 4418, SOUTH AFRICA  
 info@thermowise.co.za / www.thermowise.co.za



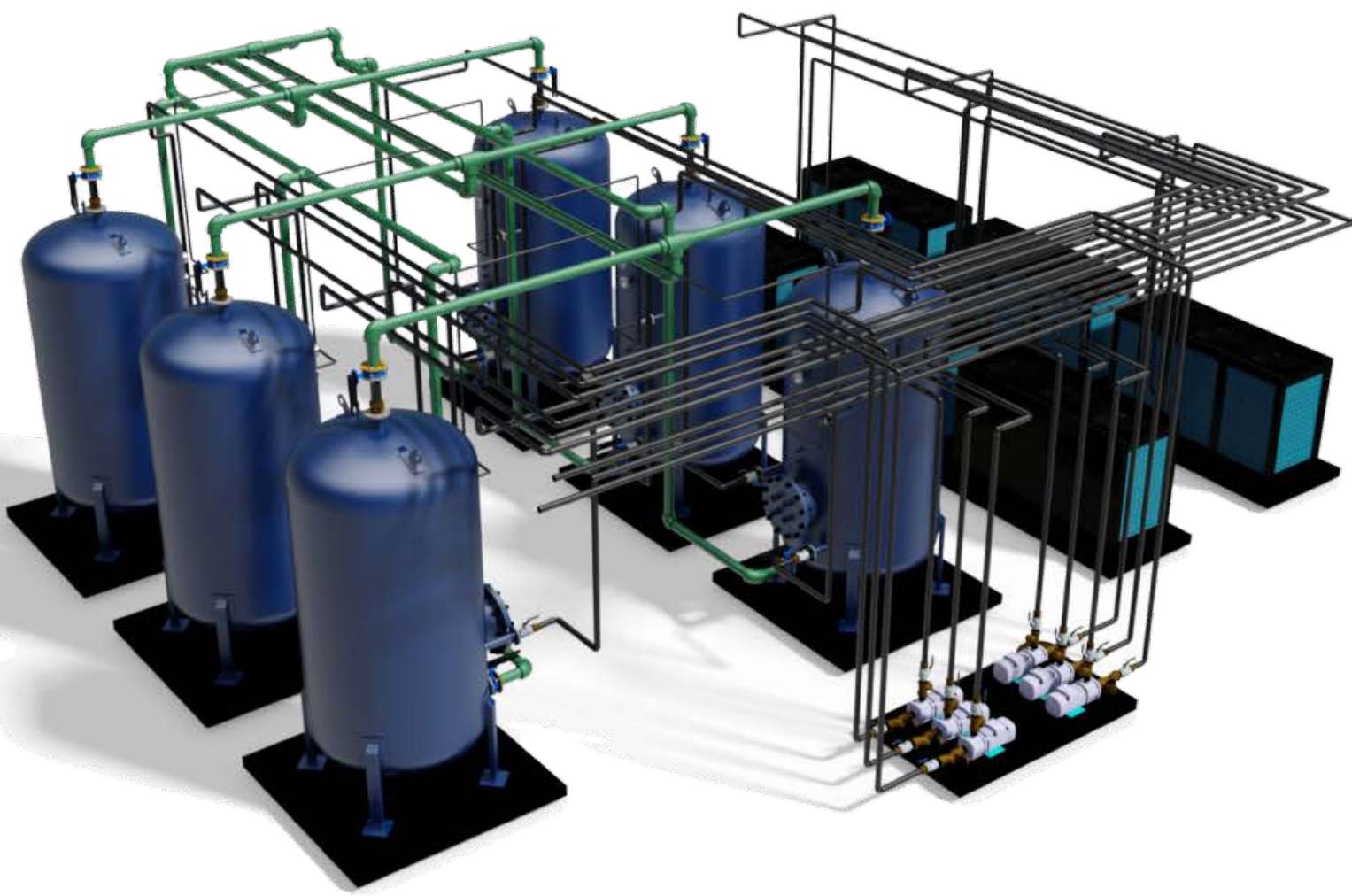
# INDEX

Page 1	Features & Benefits
Page 2	Quick Reference
Page 3	Dimensional Data
Page 4-11	HKRS Specifications & Technical Parameters

COMMERCIAL

INDUSTRIAL

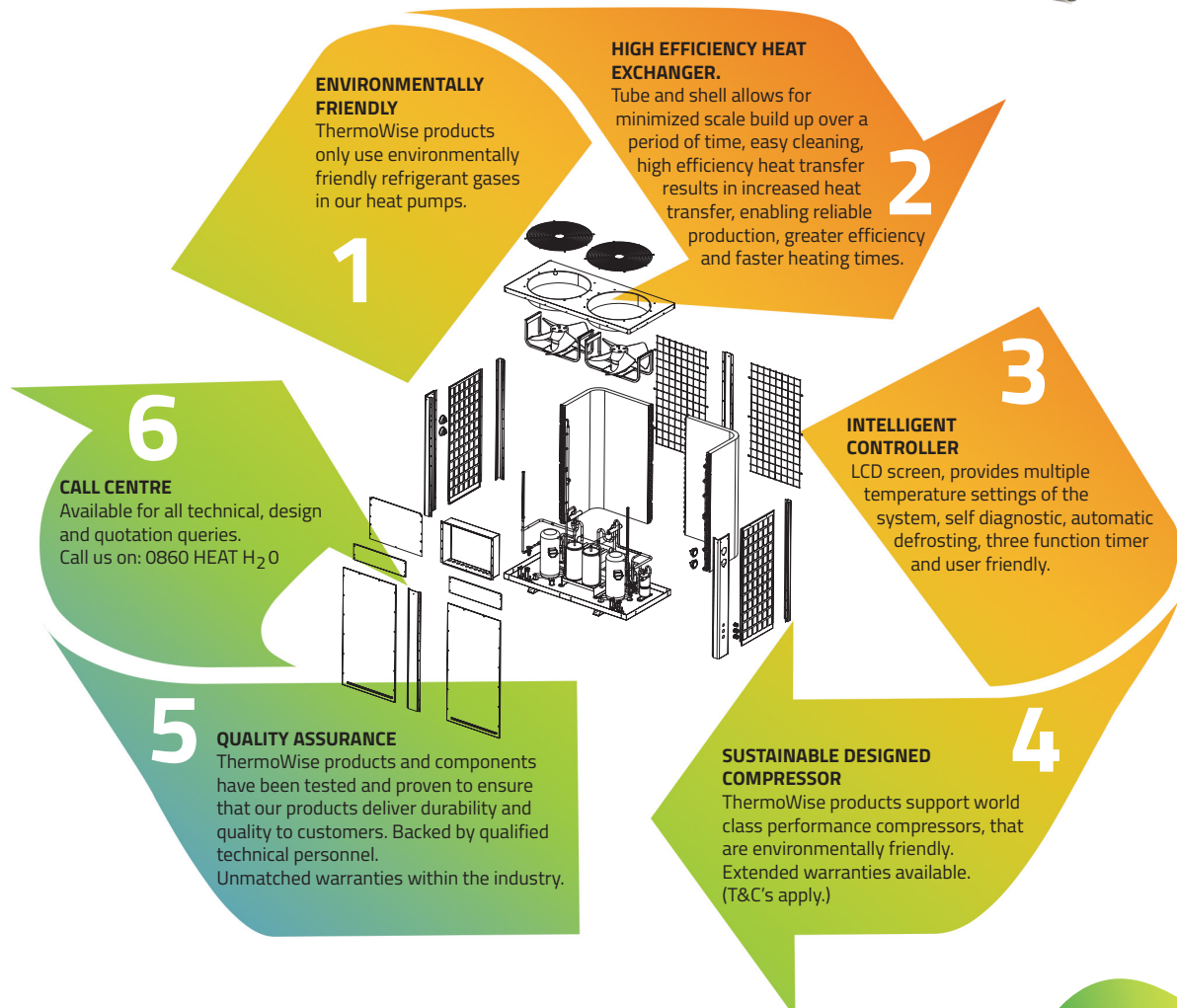
AGRICULTURAL



# WHY ThermoWise AIR TO WATER HEAT PUMPS

are the preferred choice within the market place!

As part of one of the world's largest heat pump manufacturing groups, ThermoWise delivers products that are innovative, reliable and durable, and produced to the highest standards.



# HIGH TEMP. RANGE

## HKRS RANGE AIR TO WATER HEAT PUMP

13.5kW	- MODEL: HKRS - 140E/SN3-M	Page 4
16kW	- MODEL: HKRS - 160E/SN3-M	Page 5
27kW	- MODEL: HKRS - 270E/SN3-M	Page 6
31kW	- MODEL: HKRS - 310E/SN3-M	Page 7
39kW	- MODEL: HKRS - 390E/SN3-M	Page 8
45kW	- MODEL: HKRS - 450E/SN3-M	Page 9
60kW	- MODEL: HKRS - 600E/SN3-V	Page 10
68kW	- MODEL: HKRS - 680E/SN3-V	Page 11

COMMERCIAL

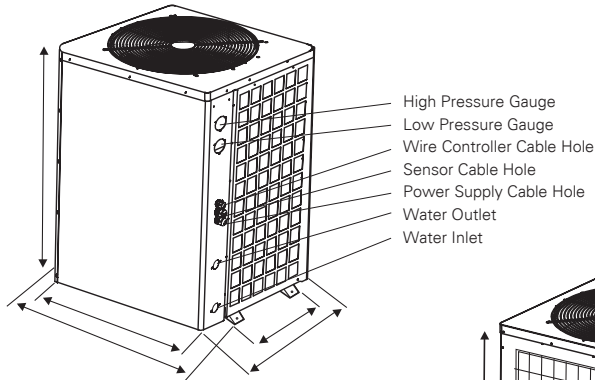
INDUSTRIAL

AGRICULTURAL



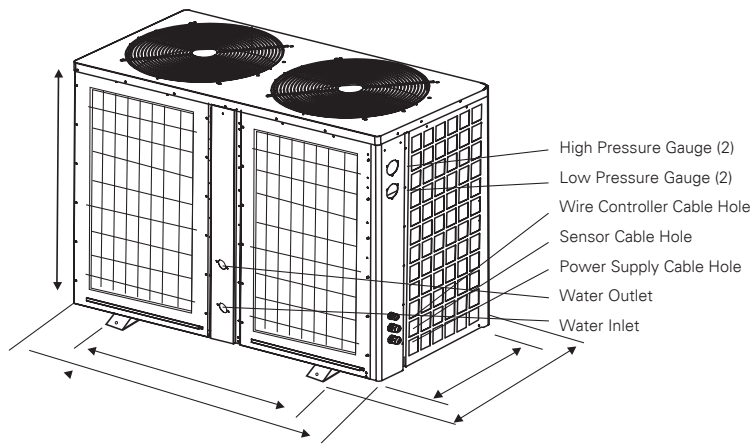
**DIMENSIONAL DATA**

HKRS-140E/SN3-M

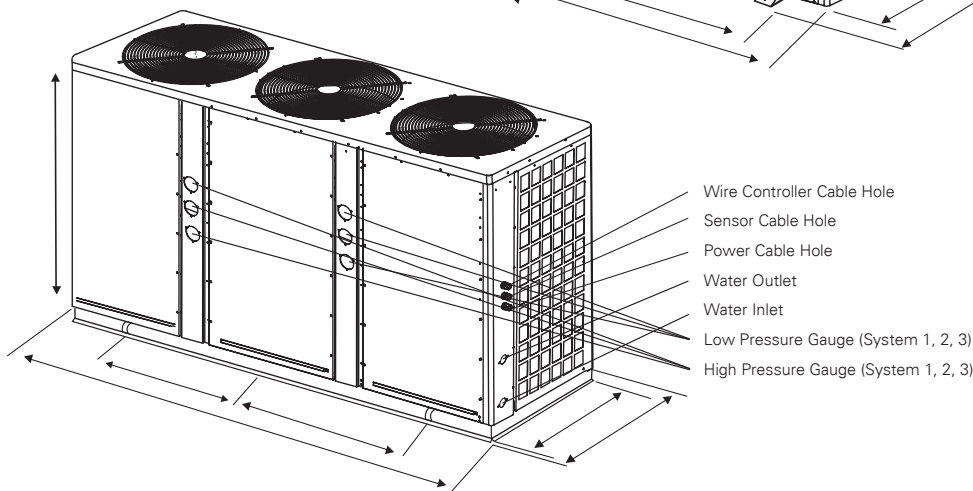


# HIGH TEMP. RANGE

HKRS-160E/SN3-M / 270E/SN3-M / 310E/SN3-M



HKRS-390E/SN3-M / 450E/SN3-M



Model	Length (mm)	Wide (mm)	Height (mm)
HKRS-140E/SN3-M	752	690	965
HKRS-210E/SN3-M	752	690	965
HKRS-270E/SN3-M	1450	702	1060
HKRS-310E/SN3-M	1450	702	1260
HKRS-390E/SN3-M	2150	765	1290
HKRS-450E/SN3-M	2150	765	1290
HKRS-600E/SN3-V	2000	980	1910
HKRS-680E/SN3-V	2000	980	1910

INPUT 3.63kW / OUTPUT 13.5kW

MODEL NO: HKRS - 140E/SN3-M

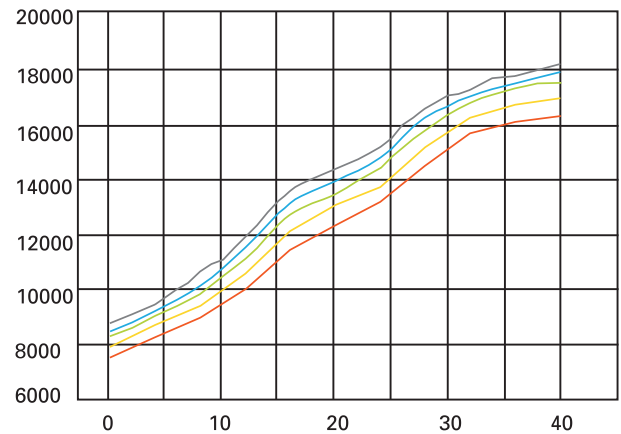
Power supply		Ph-V-Hz	380V/3PH/50HZ
Working temp.		°C	-5°C~43°C
Max. outlet water temp.		°C	75°C
Water heating (A30/W60)	Capacity	kW	13.5
	Input	kW	3.63
	CoP		3.72
	Rated current	A	6.25
Max. input consumption		kW	5.44
Max. input current		A	9.37
Starting current		A	52

Compressor	Type / Brand		Scroll / Copeland
	No. of compressor	PCS	1
	Thermal protector		Inner
Fan motor	Speed	r/min	800/500
	Air flow	m³/h	7000
	Quantity		1
Condenser	Type		Copper tube and shell
	Diameter of copper pipe	mm	19
	Quantity		1
Evaporator	Fin type		Hydrophilic aluminum
	Tube outer dia. and type	mm	φ9.52 inner groove tube
Throttling element	Type		Thermostatic expansion valve
	Brand		Emerson
Wire controller	Type		Intelligent & LCD
	The length of control cable	m	12
	Set temp.	°C	25 - 70
Water system	Materials of water pipe		Copper
	Water flow	m³/h	2.9
	Water different pressure	kPa	50
	Diameter, water inlet pipe	mm	DN25
	Diameter, water outlet pipe	mm	DN25
Refrigerant			R134A
Design pressure		MPa	2.7/0.02
Outdoor noise level		dB(A)	57
Dimensions	Dimension(L*W*H)	mm	752*690*965
	Packing(L*W*H)	mm	840*750*1100
	NG/WG	kg	119/137

INPUT 3.63kW / OUTPUT 13.5kW

MODEL NO: HKRS - 140E/SN3-M

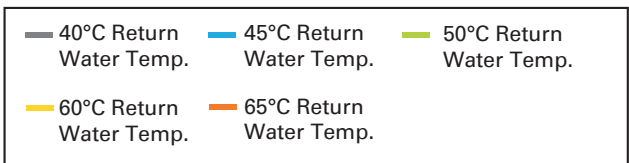
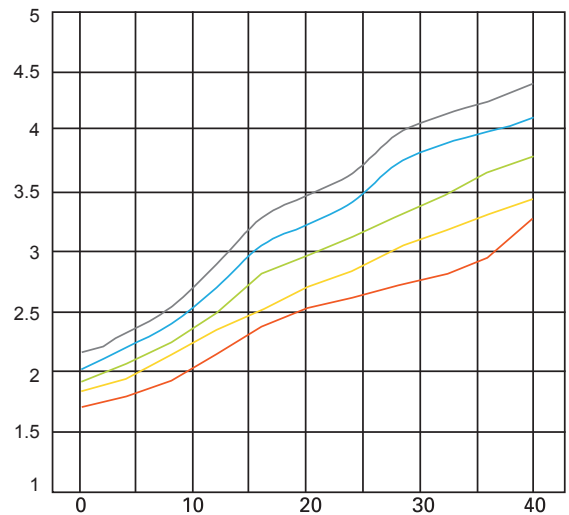
Heating Capacity Curves Ambient Temp. (°C)



INPUT 3.63kW / OUTPUT 13.5kW

MODEL NO: HKRS - 140E/SN3-M

COP Curves Ambient Temp. (°C)



INPUT 4.31kW / OUTPUT 16kW

MODEL NO: HKRS - 160E/SN3-M

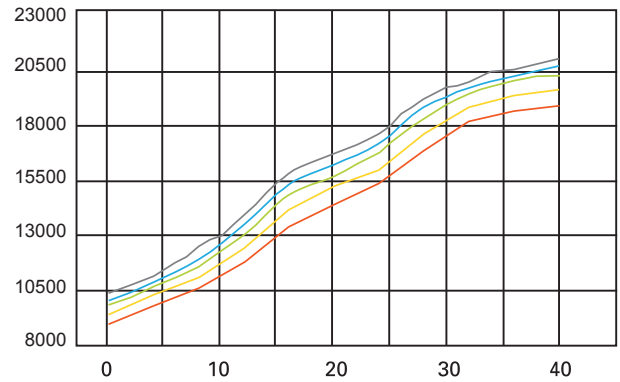
Power supply		Ph-V-Hz	380V/3PH/50HZ
Working temp.		°C	-15°C~43°C
Max. outlet water temp.		°C	75°C
Water heating (A30/W60)	Capacity	kW	16
	Input	kW	4.31
	CoP		3.71
	Rated current	A	7.43
Max. input consumption		kW	6.47
Max. input current		A	11.14
Starting current		A	51

Compressor	Type / Brand		Scroll / Copeland
	No. of compressor	PCS	1
	Thermal protector		Inner
Fan motor	Speed	r/min	800/500
	Air flow	m³/h	7000
	Quantity		1
Condenser	Type		Copper tube and shell
	Diameter of copper pipe	mm	19
	Quantity		1
Evaporator	Fin type		Hydrophilic aluminum
	Tube outer dia. and type	mm	φ9.52 inner groove tube
Throttling element	Type		Thermostatic expansion valve
	Brand		Emerson
Wire controller	Type		Intelligent & LCD
	The length of control cable	m	12
	Set temp.	°C	25 - 70
Water system	Materials of water pipe		Copper
	Water flow	m³/h	3.1
	Water different pressure	kPa	50
	Diameter, water inlet pipe	mm	DN25
	Diameter, water outlet pipe	mm	DN25
Refrigerant			R134A
Design pressure		MPa	2.7/0.02
Outdoor noise level		dB(A)	58
Dimensions	Dimension(L*W*H)	mm	752*690*965
	Packing(L*W*H)	mm	840*750*1100
	NG/WG	kg	130/145

INPUT 4.31kW / OUTPUT 16kW

MODEL NO: HKRS - 160E/SN3-M

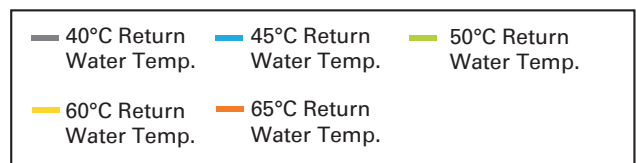
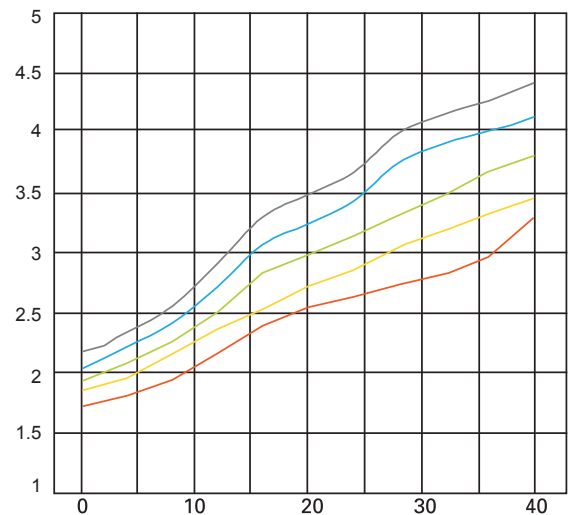
Heating Capacity Curves Ambient Temp. (°C)



INPUT 4.31kW / OUTPUT 16kW

MODEL NO: HKRS - 160E/SN3-M

COP Curves Ambient Temp. (°C)





INPUT 7.32kW / OUTPUT 27kW

MODEL NO: HKRS - 270E/SN3-M

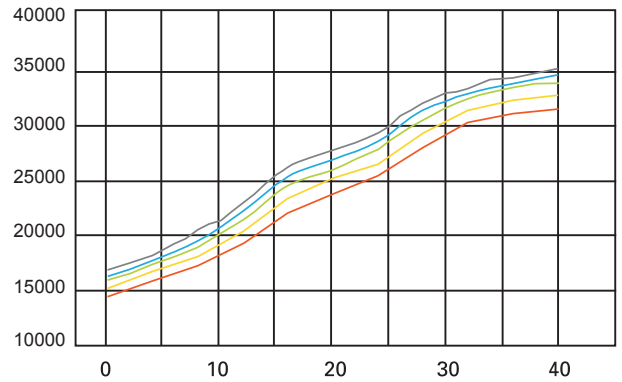
Power supply		Ph-V-Hz	380V/3PH/50HZ
Working temp.		°C	-5°C~43°C
Max. outlet water temp.		°C	75°C
Water heating (A30/W60)	Capacity	kW	27
	Input	kW	7.32
	CoP		3.69
	Rated current	A	12.60
Max. input consumption		kW	10.98
Max. input current		A	18.90
Starting current		A	60

Compressor	Type / Brand		Scroll / Copeland
	No. of compressor	PCS	2
	Thermal protector		Inner
Fan motor	Speed	r/min	800/500
	Air flow	m³/h	7000
	Quantity		2
Condenser	Type		Copper tube and shell
	Diameter of copper pipe	mm	19
	Quantity		2
Evaporator	Fin type		Hydrophilic aluminum
	Tube outer dia. and type	mm	φ 9.52 inner grove tube
Throttling element	Type		Thermostatic expansion valve
	Brand		Emerson
Wire controller	Type		Intelligent & LCD
	The length of control cable	m	12
	Set temp.	°C	25 - 70
Water system	Materials of water pipe		Copper
	Water flow	m³/h	5.8
	Water different pressure	kPa	55
	Diameter, water inlet pipe	mm	DN40
	Diameter, water outlet pipe	mm	DN40
Refrigerant			R134A
Design pressure		MPa	2.7/0.02
Outdoor noise level		dB(A)	60
Dimensions	Dimension(L*W*H)	mm	1450*702*1060
	Packing(L*W*H)	mm	1525*805*1220
	NG/WG	kg	249/294

INPUT 7.32kW / OUTPUT 27kW

MODEL NO: HKRS - 270E/SN3-M

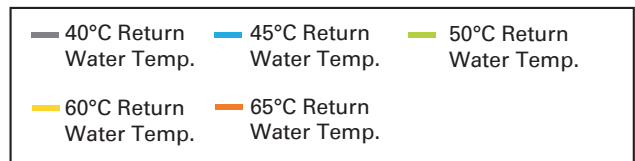
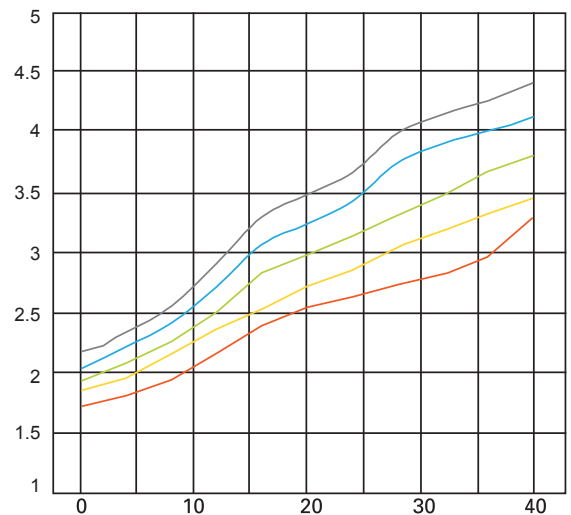
Heating Capacity Curves Ambient Temp. (°C)



INPUT 7.32kW / OUTPUT 27kW

MODEL NO: HKRS - 270E/SN3-M

COP Curves Ambient Temp. (°C)



INPUT 8.38kW / OUTPUT 31kW

MODEL NO: HKRS - 310E/SN3-M

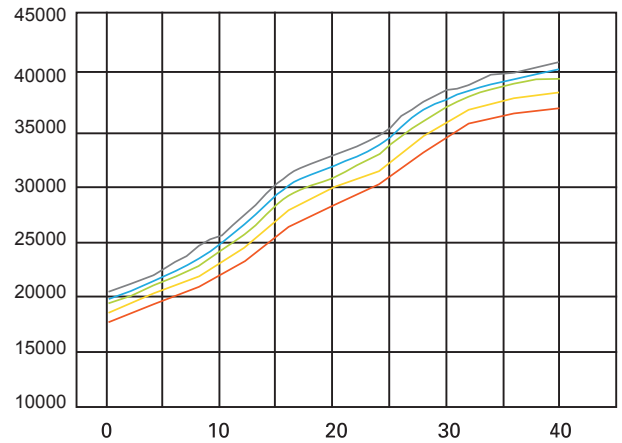
Power supply		Ph-V-Hz	380V/3PH/50HZ
Working temp.		°C	-5°C~43°C
Max. outlet water temp.		°C	75°C
Water heating (A30/W60)	Capacity	kW	31
	Input	kW	8.38
	CoP		3.70
	Rated current	A	14.43
Max. input consumption		kW	12.57
Max. input current		A	21.64
Starting current		A	67

Compressor	Type / Brand		Scroll / Copeland
	No. of compressor	PCS	2
	Thermal protector		Inner
Fan motor	Speed	r/min	800/500
	Air flow	m³/h	7000
	Quantity		2
Condenser	Type		Copper tube and shell
	Diameter of copper pipe	mm	19
	Quantity		2
Evaporator	Fin type		Hydrophilic aluminum
	Tube outer dia. and type	mm	φ 9.52 inner grove tube
Throttling element	Type		Thermostatic expansion valve
	Brand		Emerson
Wire controller	Type		Intelligent & LCD
	The length of control cable	m	12
	Set temp.	°C	25 - 70
Water system	Materials of water pipe		Copper
	Water flow	m³/h	6.7
	Water different pressure	kPa	55
	Diameter, water inlet pipe	mm	DN40
	Diameter, water outlet pipe	mm	DN40
Refrigerant			R134A
Design pressure		MPa	2.7/0.02
Outdoor noise level		dB(A)	61
Dimensions	Dimension(L*W*H)	mm	1450*702*1260
	Packing(L*W*H)	mm	1525*805*1420
	NG/WG	kg	268/316

INPUT 8.38kW / OUTPUT 31kW

MODEL NO: HKRS - 310E/SN3-M

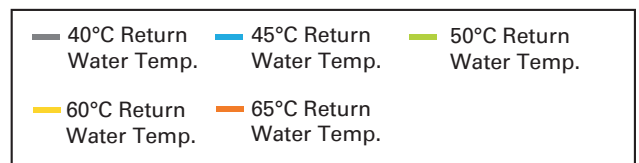
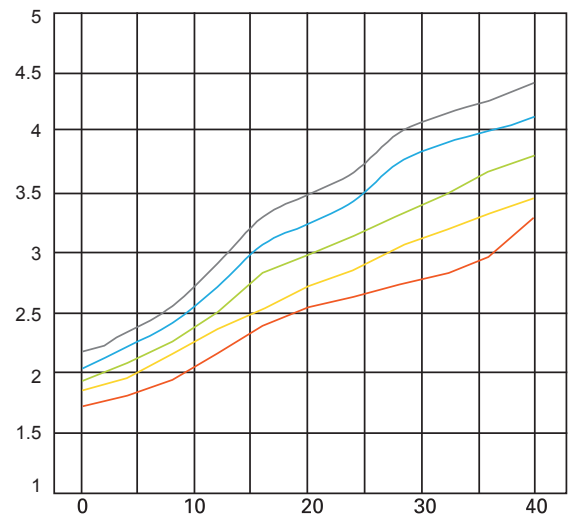
Heating Capacity Curves Ambient Temp. (°C)



INPUT 8.38kW / OUTPUT 31kW

MODEL NO: HKRS - 310E/SN3-M

COP Curves Ambient Temp. (°C)



INPUT 10.46kW / OUTPUT 39kW

MODEL NO: HKRS - 390E/SN3-M

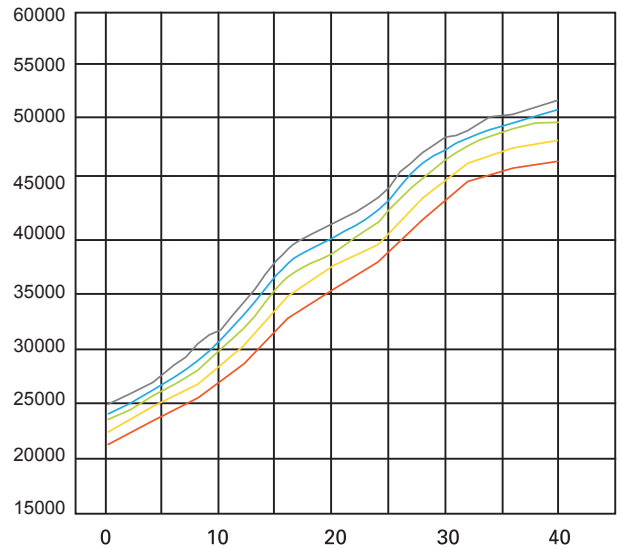
Power supply		Ph-V-Hz	380V/3PH/50HZ
Working temp.		°C	-5°C~43°C
Max. outlet water temp.		°C	75°C
Water heating (A30/W60)	Capacity	kW	39
	Input	kW	10.46
	CoP		3.73
	Rated current	A	18.00
Max. input consumption		kW	15.68
Max. input current		A	27.00
Starting current		A	68

Compressor	Type / Brand		Scroll / Copeland
	No. of compressor	PCS	3
	Thermal protector		Inner
Fan motor	Speed	r/min	800/500
	Air flow	m³/h	7000
	Quantity		3
Condenser	Type		Copper tube and shell
	Diameter of copper pipe	mm	19
	Quantity		3
Evaporator	Fin type		Hydrophilic aluminum
	Tube outer dia. and type	mm	φ 9.52 inner grove tube
Throttling element	Type		Thermostatic expansion valve
	Brand		Emerson
Wire controller	Type		Intelligent & LCD
	The length of control cable	m	12
	Set temp.	°C	25 - 70
Water system	Materials of water pipe		Copper
	Water flow	m³/h	11.8
	Water different pressure	kPa	55
	Diameter, water inlet pipe	mm	DN50
	Diameter, water outlet pipe	mm	DN50
Refrigerant			R134A
Design pressure		MPa	2.7/0.02
Outdoor noise level		dB(A)	63
Dimensions	Dimension(L*W*H)	mm	2150*765*1290
	Packing(L*W*H)	mm	2250*865*1450
	NG/WG	kg	398/460

INPUT 10.46kW / OUTPUT 39kW

MODEL NO: HKRS - 390E/SN3-M

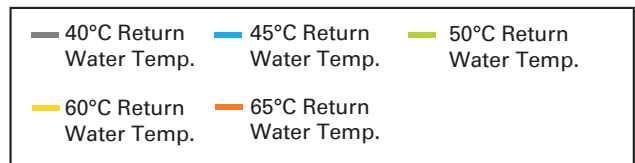
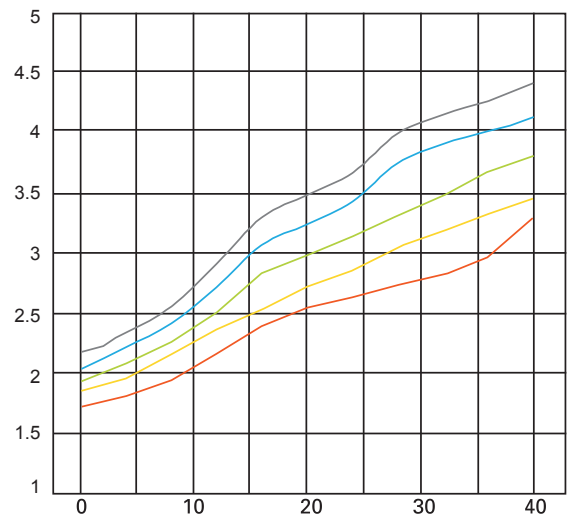
Heating Capacity Curves Ambient Temp. (°C)



INPUT 10.46kW / OUTPUT 39kW

MODEL NO: HKRS - 390E/SN3-M

COP Curves Ambient Temp. (°C)



INPUT 12.16kW / OUTPUT 45kW

MODEL NO: HKRS - 450E/SN3-M

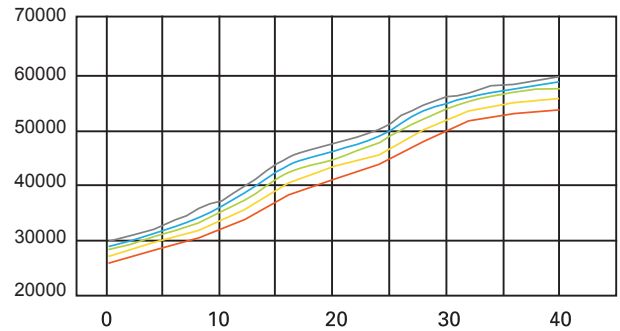
Power supply		Ph-V-Hz	380V/3PH/50HZ
Working temp.		°C	-5°C~43°C
Max. outlet water temp.		°C	75°C
Water heating (A30/W60)	Capacity	kW	45
	Input	kW	12.16
	CoP		3.70
	Rated current	A	20.94
Max. input consumption		kW	18.24
Max. input current		A	31.41
Starting current		A	76

Compressor	Type / Brand		Scroll / Copeland
	No. of compressor	PCS	3
	Thermal protector		Inner
Fan motor	Speed	r/min	800/500
	Air flow	m³/h	7000
	Quantity		3
Condenser	Type		Copper tube and shell
	Diameter of copper pipe	mm	19
	Quantity		3
Evaporator	Fin type		Hydrophilic aluminum
	Tube outer dia. and type	mm	φ 9.52 inner grove tube
Throttling element	Type		Thermostatic expansion valve
	Brand		Emerson
Wire controller	Type		Intelligent & LCD
	The length of control cable	m	12
	Set temp.	°C	25 - 70
Water system	Materials of water pipe		Copper
	Water flow	m³/h	9.7
	Water different pressure	kPa	55
	Diameter, water inlet pipe	mm	DN50
	Diameter, water outlet pipe	mm	DN50
Refrigerant			R134A
Design pressure		MPa	2.7/0.02
Outdoor noise level		dB(A)	63
Dimensions	Dimension(L*W*H)	mm	2150*765*1290
	Packing(L*W*H)	mm	2250*865*1450
	NG/WG	kg	428/490

INPUT 12.16kW / OUTPUT 45kW

MODEL NO: HKRS - 450E/SN3-M

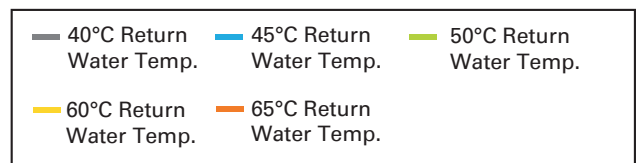
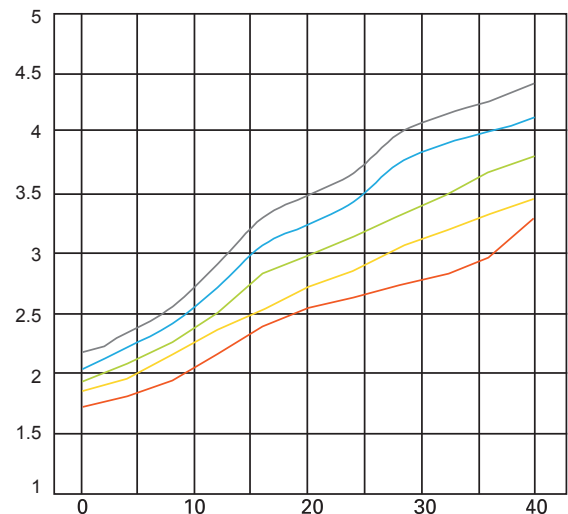
Heating Capacity Curves Ambient Temp. (°C)



INPUT 12.16kW / OUTPUT 45kW

MODEL NO: HKRS - 450E/SN3-M

COP Curves Ambient Temp. (°C)



INPUT 17.5kW / OUTPUT 60kW

MODEL NO: HKRS - 600E/SN3-V

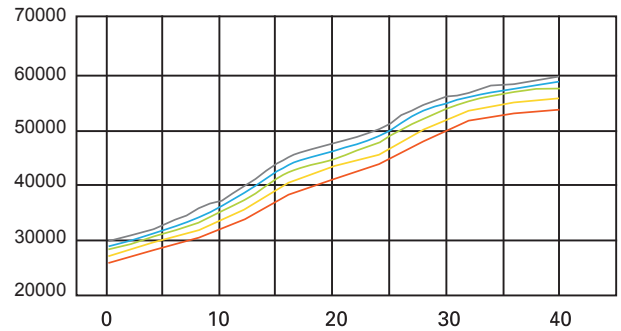
Power supply		Ph-V-Hz	380V/3PH/50HZ
Working temp.		°C	-5°C~43°C
Max. outlet water temp.		°C	75°C
Water heating (A30/W60)	Capacity	kW	60
	Input	kW	17.5
	CoP		3.43
	Rated current	A	30.13
Max. input consumption		kW	26.25
Max. input current		A	45.20
Starting current		A	130

Compressor	Type / Brand		Scroll / Copeland
	No. of compressor	PCS	2
	Thermal protector		Inner
Fan motor	Speed	r/min	900
	Air flow	m³/h	13500
	Quantity		3
Condenser	Type		Copper tube and shell
	Diameter of copper pipe	mm	25.4*2
	Quantity		2
Evaporator	Fin type		Hydrophilic aluminum
	Tube outer dia. and type	mm	ø 9.52 inner groove tube
Throttling Element	Type		Thermostatic expansion valve
	Brand		Danfoss
Wire controller	Type		Intelligent & LCD
	The length of control cable	m	12
	Set temp.	°C	30 - 75
Water system	Materials of water pipe		Copper
	Water flow	m³/h	12.9
	Water different pressure	kPa	60
	Diameter, water inlet pipe	mm	DN50 (Female)
	Diameter, water outlet pipe	mm	DN50 (Female)
Refrigerant			R134A
Design pressure		MPa	2.8/0.02
Outdoor noise level		dB(A)	70
Dimensions	Dimension(L*W*H)	mm	2000*980*1910
	Packing(L*W*H)	mm	2130*1100*2090
	NG/WG	kg	600/690

INPUT 17.5kW / OUTPUT 60kW

MODEL NO: HKRS - 600E/SN3-V

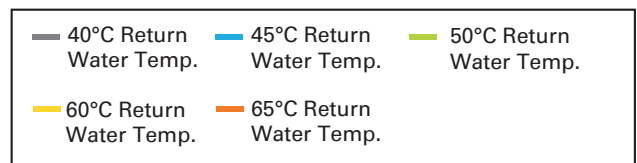
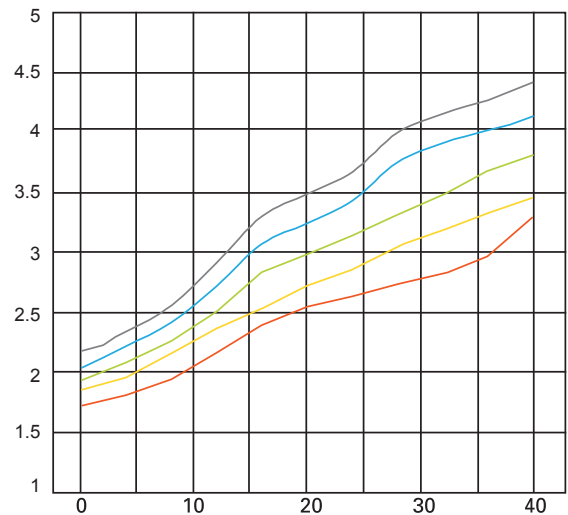
Heating Capacity Curves Ambient Temp. (°C)



INPUT 17.5kW / OUTPUT 60kW

MODEL NO: HKRS - 600E/SN3-V

COP Curves Ambient Temp. (°C)



INPUT 20kW / OUTPUT 68kW

MODEL NO: HKRS - 680E/SN3-V

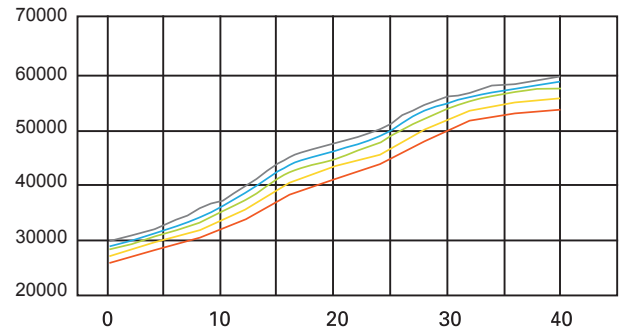
Power supply		Ph-V-Hz	380V/3PH/50HZ
Working temp.		°C	-5°C~43°C
Max. outlet water temp.		°C	75°C
Water heating (A30/W60)	Capacity	kW	68
	Input	kW	20
	CoP		3.40
	Rated current	A	34.44
Max. input consumption		kW	30
Max. input current		A	51.65
Starting current		A	134

Compressor	Type / Brand		Scroll / Copeland
	No. of compressor	PCS	2
	Thermal protector		Inner
Fan motor	Speed	r/min	900
	Air flow	m³/h	13500
	Quantity		2
Condenser	Type		Copper tube and shell
	Diameter of copper pipe	mm	25.4*2
	Quantity		2
Evaporator	Fin type		Hydrophilic aluminum
	Tube outer dia. and type	mm	φ 9.52 inner groove tube
Throttling element	Type		Thermostatic expansion valve
	Brand		Danfoss
Wire controller	Type		Intelligent & LCD
	The length of control cable	m	12
	Set temp.	°C	30 - 75
Water system	Materials of water pipe		Copper
	Water flow	m³/h	14.6
	Water different pressure	Kpa	60
	Diameter, water inlet pipe	mm	DN50 (Female)
	Diameter, water outlet pipe	mm	DN50 (Female)
Refrigerant			R134A
Design pressure		MPa	2.8/0.02
Outdoor noise level		dB(A)	70
Dimensions	Dimension(L*W*H)	mm	2000*980*1910
	Packing(L*W*H)	mm	2130*1100*2090
	NG/WG	kg	600/690

INPUT 20kW / OUTPUT 68kW

MODEL NO: HKRS - 680E/SN3-V

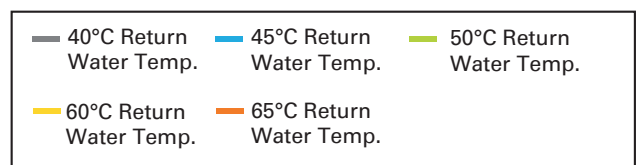
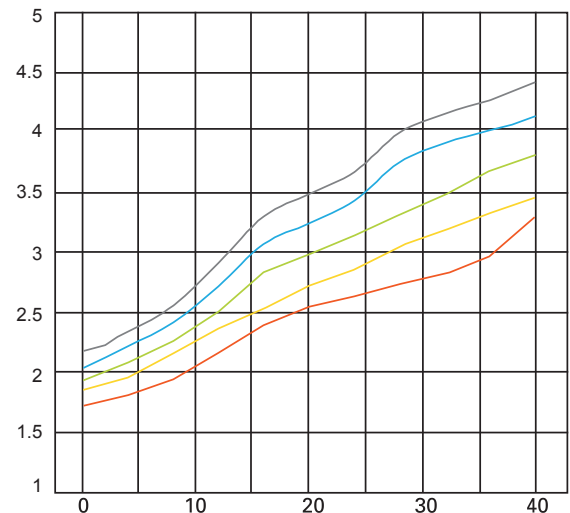
Heating Capacity Curves Ambient Temp. (°C)



INPUT 20kW / OUTPUT 68kW

MODEL NO: HKRS - 680E/SN3-V

COP Curves Ambient Temp. (°C)



We can create a more sustainable, cleaner and safer world by making wiser energy choices.

–Robert Alan



**ThermoWise**  
INTELLIGENT ENERGY SAVING SOLUTIONS



**ThermoWise**  
INTELLIGENT ENERGY SAVING SOLUTIONS